


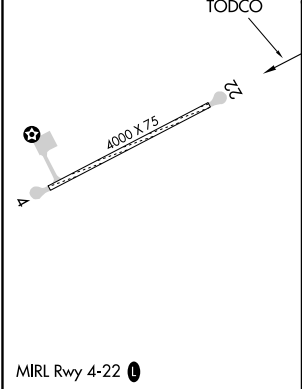
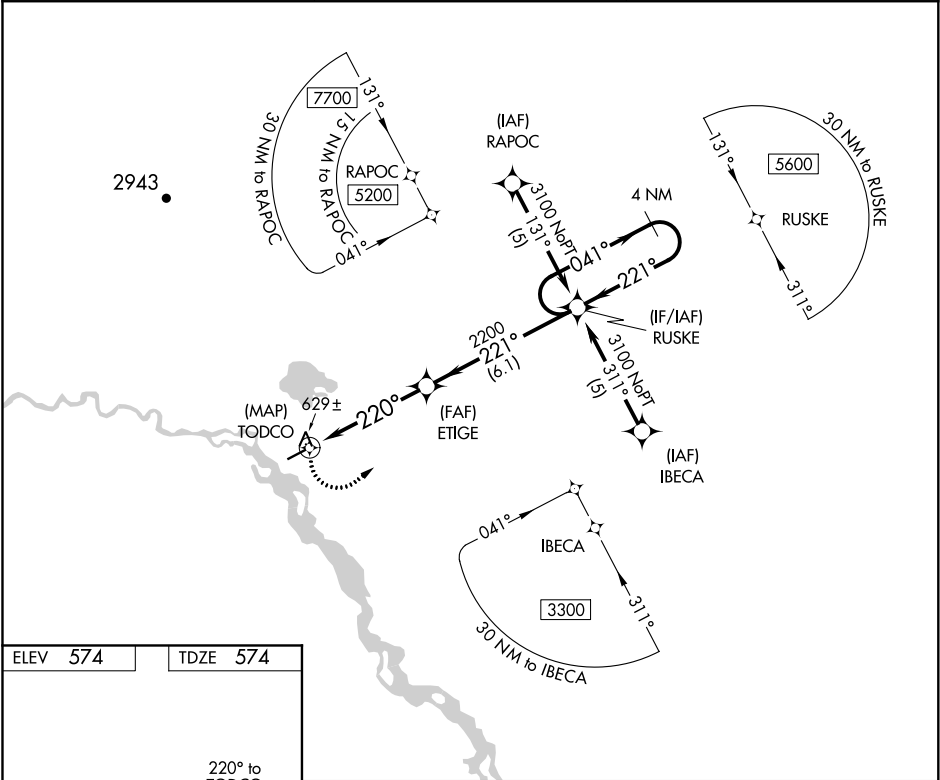
APP CRS	Rwy Idg	4000
220°	TDZE	574
	Apt Elev	574

RNAV (GPS) RWY 22

VENETIE (VEE) (PAVE)

<div><div>▼</div><div>▲ NA</div><div>❄ -42°C</div></div>	Use Fort Yukon altimeter setting; when not received procedure NA. Procedure NA at night. DME/DME RNP-0.3 NA. Helicopter visibility reduction below 1 SM NA.	MISSED APPROACH: Climbing left turn to 3100 direct RUSKE and hold.
--	---	--

FYU/PFYU AWOS-3P 125.8	ANCHORAGE CENTER 135.0 284.7	CTAF 122.9 
---------------------------	---------------------------------	---



3100	RUSKE		4 NM Holding Pattern	
CATEGORY	A	B	C	D
LNAV MDA	1020-1	446 (500-1)	NA	
CIRCLING	1200-1	626 (700-1)	NA	

AK, 05 NOV 2020 to 31 DEC 2020

AK, 05 NOV 2020 to 31 DEC 2020