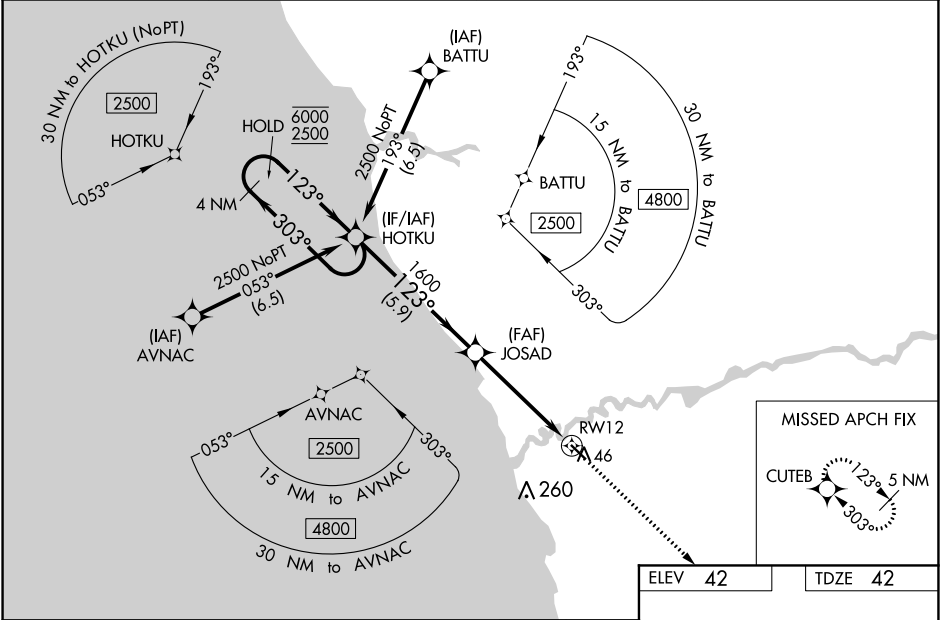


WAAS CH <b>99311</b> <b>W12A</b>	APP CRS <b>123°</b>	Rwy Idg <b>4000</b> TDZE <b>42</b> Apt Elev <b>42</b>
--	------------------------	---

RNAV (GPS) RWY 12  
QUINHAGAK (AQH) (PAQH)

RNP APCH.	Procedure NA at night. Baro-VNAV and VDP NA when using Kipnuk altimeter setting. For uncompensated Baro-VNAV systems, LNAV/VNAV NA below -21°C or above 54°C. When local altimeter setting not received, use Kipnuk altimeter setting and increase all DA and MDA 160 feet; increase LPV all Cats visibility and LNAV/VNAV all Cats visibility ½ SM, LNAV Cats C, D visibility ¾ SM, increase Circling Cat C visibility ½ SM, increase Circling Cat D visibility ¼ SM.	MISSED APPROACH: Climb to 5200 direct CUTEb and hold, continue climb-in-hold to 5200.
-----------	--	---

AWOS-3P <b>121.575</b>	ANCHORAGE CENTER <b>125.2 372.0</b>	KENAI RADIO <b>122.1</b>	UNICOM <b>122.8</b> (CTAF) <b>0</b>
---------------------------	--	-----------------------------	--



4 NM Holding Pattern		HOTKU		JOSAD		RWY 12	
6000 2500		303° 123°		1600		123° to RWY 12	
GP 3.00° TCH 35				5.9 NM		3.4 NM	
				1.4 NM		1.4 NM	
				*LNAV only.		CUTEb	
				5200			
				1600			
				*1.4 NM to RWY 12			
				RWY 12			
				64 ±			
				4000 X 75			
				3			
				MIRL Rwy 12-30			
				ELEV 42		TDZE 42	
				CATEGORY			
				A		B	
				C		D	
				LPV DA		292-1 250 (300-1)	
				LNAV/VNAV DA		292-1 250 (300-1)	
				LNAV MDA		500-1 458 (500-1) 500-1 3/8 458 (500-1 3/8)	
				CIRCLING		500-1 458 (500-1) 580-1 1/2 538 (600-1 1/2) 600-2 558 (600-2)	