

WAAS CH <b>78213</b> <b>W06A</b>	APP CRS <b>059°</b>	Rwy Idg TDZE <b>54</b> Apt Elev <b>55</b>
--	------------------------	---

RNAV (GPS) RWY 6

ROBERT/BOB/CURTIS MEMORIAL (D76) (PFNO)

RNP APCH.

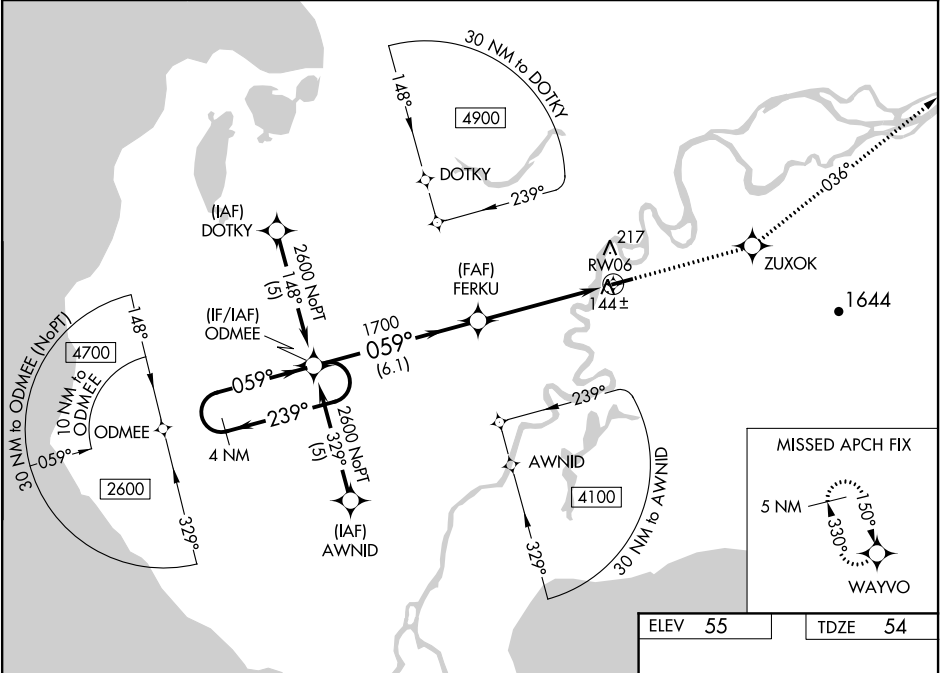
▼

NA

Baro-VNAV NA. Use Selawik altimeter setting; when not received, use Kotzebue altimeter setting and increase all DA/MDA 40 feet, increase LPV and LNAV/VNAV all Cats and LNAV Cat D visibility ¼ mile.  
Rwy 6 helicopter visibility reduction below ¾ SM NA.

MISSED APPROACH: Climb to 4100 direct ZUXOK and via track 036° to WAYVO and hold, continue climb-in-hold to 4100.

AWOS-3P <b>120.0</b>	ANCHORAGE CENTER <b>119.2 263.0</b>	CTAF <b>122.7</b>
-------------------------	--	----------------------



VGSi and RNAV glidepath not coincident (VGSi Angle 3.00/TCH 25).				
4 NM Holding Pattern ODMEE				
<div><div>2600 ← 239°</div><div>059° →</div><div>059°</div><div>1700</div><div>FERKU</div><div>RW06</div><div>6.1 NM</div><div>5 NM</div></div>				
GP 3.00° TCH 40				
CATEGORY	A	B	C	D
LPV DA	399-1¼		345 (400-1¼)	
LNAV/VNAV DA	484-1½		430 (500-1½)	
LNAV MDA	480-1	426 (500-1)	480-1¼	426 (500-1¼)
CIRCLING	600-1	545 (600-1)	600-1½ 545 (600-1½)	620-2 565 (600-2)

ELEV 55      TDZE 54

↑

✧

tr 036°

✧

4000 X 100

059° to RW06

MIRL Rwy 6-24