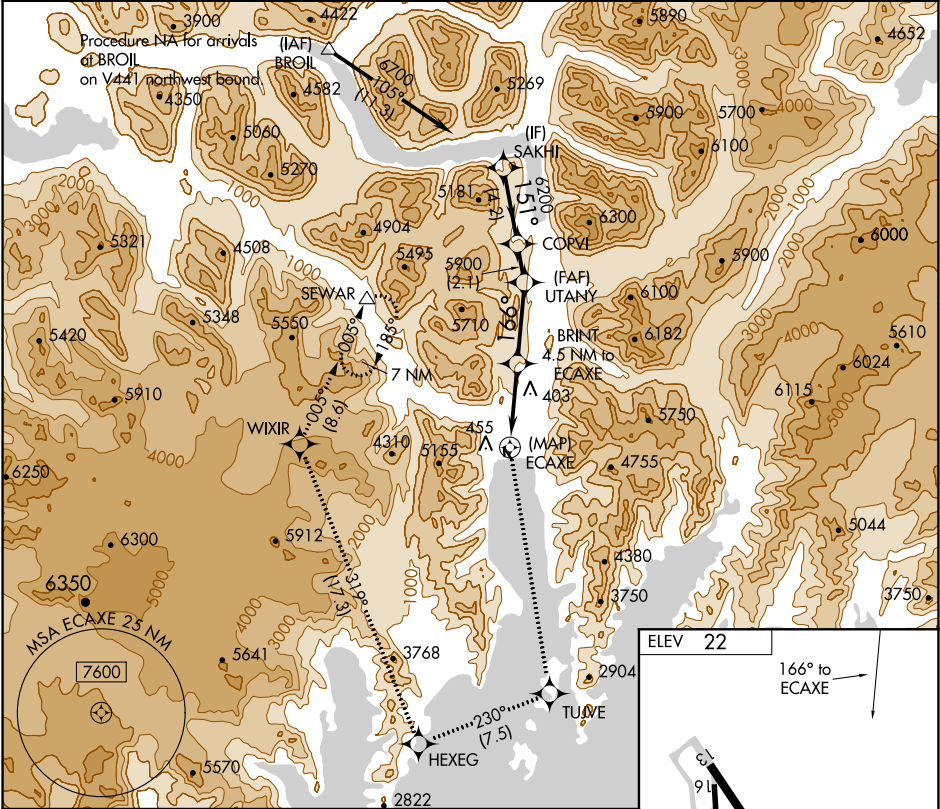


APP CRS	Rwy Idg	N/A
166°	TDZE	N/A
	Apt Elev	22

RNAV (GPS)-A
SEWARD (SWD) (PAWD)

 When local alimeter setting not received, procedure NA. Circling NA southwest of Rwy 13 and 34. Procedure NA at night. DME/DME RNP-0.3 NA. Helicopter visibility reduction below 1 SM NA. -4°C	MISSED APPROACH: Climb to 9500 direct TUJVE and on track 230° to HEXEG and on track 319° to WIXIR and on track 005° to SEWAR and hold.
--	--

ASOS 135.2	ANCHORAGE CENTER 119.7 269.0	KENAI RADIO 122.6	CTAF 122.9
---------------	---------------------------------	----------------------	---------------



SAKHI	9500	TUJVE	tr 230°	HEXEG	tr 319°	WIXIR	tr 005°	SEWAR
	COPVI	UTANY		BRINT	4.5 NM to ECAXE		ECAXE	
6700	151°	6200	5900	166°	4300			
4.2 NM	2.1 NM	4.4 NM	4.5 NM					
CATEGORY	A	B	C	D				
CIRCLING	2660-1¼ 2638 (2700-1¼)	2660-1½ 2638 (2700-1½)	NA					

