

WAAS CH 69541 W18A	APP CRS 203°	Rwy Idg TDZE Apt Elev	3400 275 275
--	------------------------	-----------------------------	---

RNAV (GPS) RWY 18

MANLEY HOT SPRINGS (MLY)(P.A.M.L)

RNP APCH.

▼

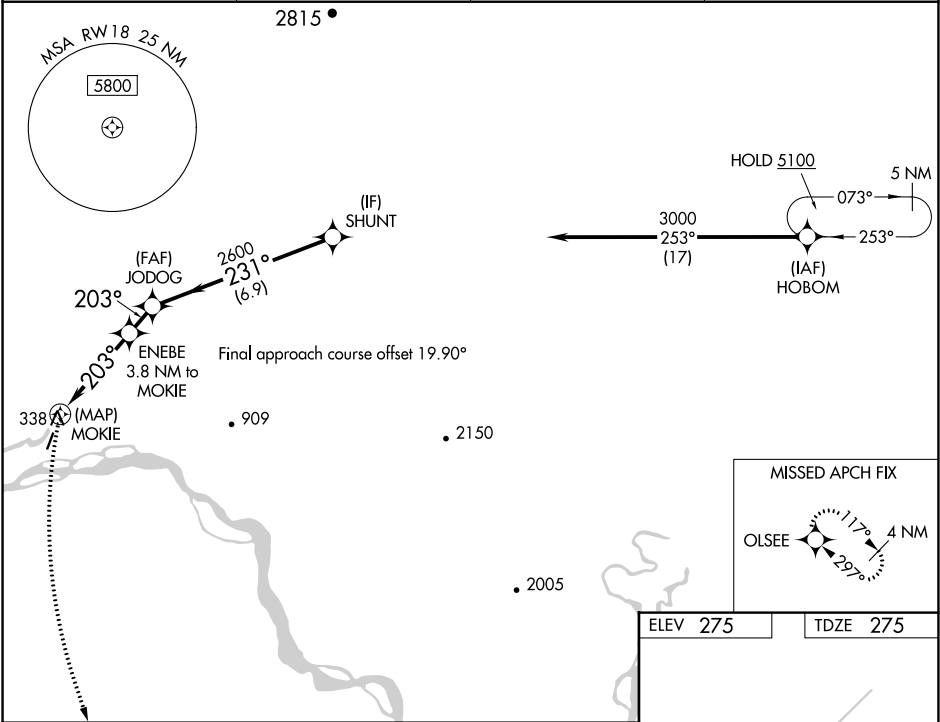
NA

☒ -22°C

When Tanana altimeter setting not received, procedure NA.
Circling NA west of Rwy 18-36. Rwy 18 helicopter visibility reduction below 1 SM NA. Procedure NA at night.

MISSED APPROACH: Climbing left turn to 4400 direct OLSEE and hold.

TAL/PATA ASOS 135.1	ANCHORAGE CENTER 120.9 319.2	FAIRBANKS RADIO 122.3 122.65	UNICOM 122.8(CTAF) 0
-------------------------------	--	--	--------------------------------



4400

OLSEE

