

RNAV (GPS) RWY 26
CENTRAL (CEM) (PACE)

MISSED APPROACH: Climbing left turn to 8000 direct BACMY and hold.

FYU/PFYU AWOS-3P	ANCHORAGE CENTER	(CTAF)
125.8	135.0 284.7	122.9 0

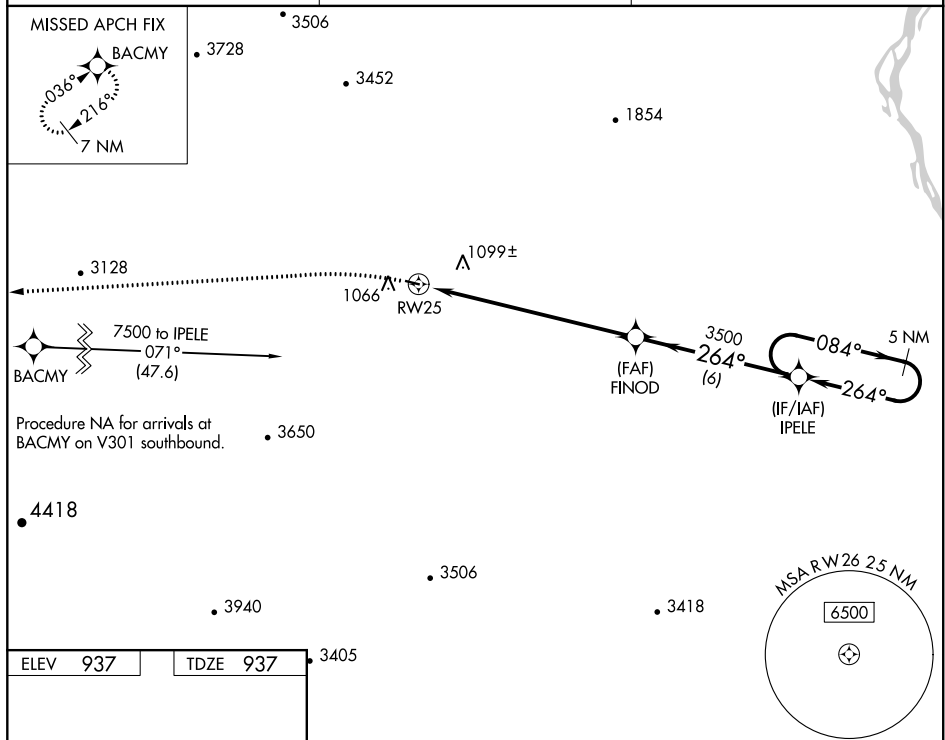


Diagram illustrating the RW26 instrument approach procedure. The diagram shows a 2782 x 60 ft runway with a 0.7% up-slope. A 264° heading is indicated to the runway. The approach includes a visual segment with obstacles, a 5 NM holding pattern at 084° and 264° headings, and a 3500 ft MDA. The approach is categorized as C (Circling) with a 2600-1 1/4 ft MDA. The diagram also shows the runway width (RW26) and the visual segment length (8 NM).

AK. 05 NOV 2020 to 31 DEC 2020