

APP CRS
083°

Rwy Idg
TDZE
936
Apt Elev
937

RNAV (GPS) RWY 8
CENTRAL (CEM) (PACE)

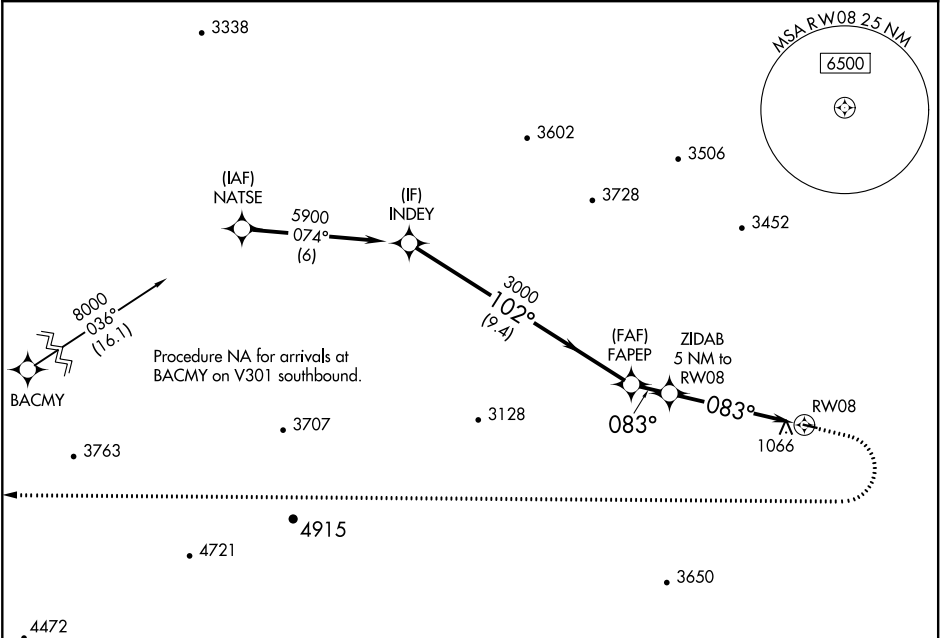
NA

-43°C

DME/DME RNP-0.3 NA. Use Fort Yukon altimeter setting; when not received, procedure NA. Helicopter visibility reduction below 1 SM NA. Night Landing: Rwy 8 NA.

MISSED APPROACH: Climb to 3700 then climbing right turn to 8000 direct BACMY and hold.

FYU/PFYU AWOS-3P 125.8	ANCHORAGE CENTER 135.0 284.7	CTAF 122.9 0
----------------------------------	--	------------------------



MISSED APCH FIX

BACMY

036°

216°

7 NM

ELEV 937

TDZE 936

Visual Segment - Obstacles.

INDEY

5900

102°

FAPEP

3000

083°

ZIDAB 5 NM to RWY 08

2540

RWY 08

3700

8000

BACMY

9.4 NM

1.4 NM

5 NM

CATEGORY	A	B	C	D
LNNAV MDA	2420-1¼ 1484 (1500-1¼)	2420-1½ 1484 (1500-1½)	NA	
CIRCLING	2420-1¼ 1483 (1500-1¼)	2420-1½ 1483 (1500-1½)	NA	

MIRL Rwy 8-26 0