



WAAS CH <b>56411</b> <b>W23A</b>	APP CRS <b>227°</b>	Rwy Idg <b>10004</b> TDZE <b>929</b> Apt Elev <b>952</b>
--	------------------------	--

RNAV (GPS) RWY 23R

BATTLE CREEK EXECUTIVE AT KELLOGG FIELD (BTL)

RNP APCH.			<div>MALSR</div> <div></div>	MISSED APPROACH: Climb to 2500 direct WEVSO and hold.	
<div><div><div><div><div></div><div></div></div><div><div></div><div></div></div></div><div><div></div><div></div></div></div><div>Circling NA to Rwys 5R and 23L. Circling Rwy 31 NA at night. For uncompensated Baro-VNAV systems, LNAV/VNAV NA below -20°C or above 54°C. ** RVR 1800 authorized with use of FD or AP or HUD to DA.</div></div>					
ATIS 128.325	GREAT LAKES APP CON ★ 119.2 239.25	BATTLE CREEK TOWER ★ 126.825	GND CON 121.7	UNICOM 122.95	CTAF 126.825 

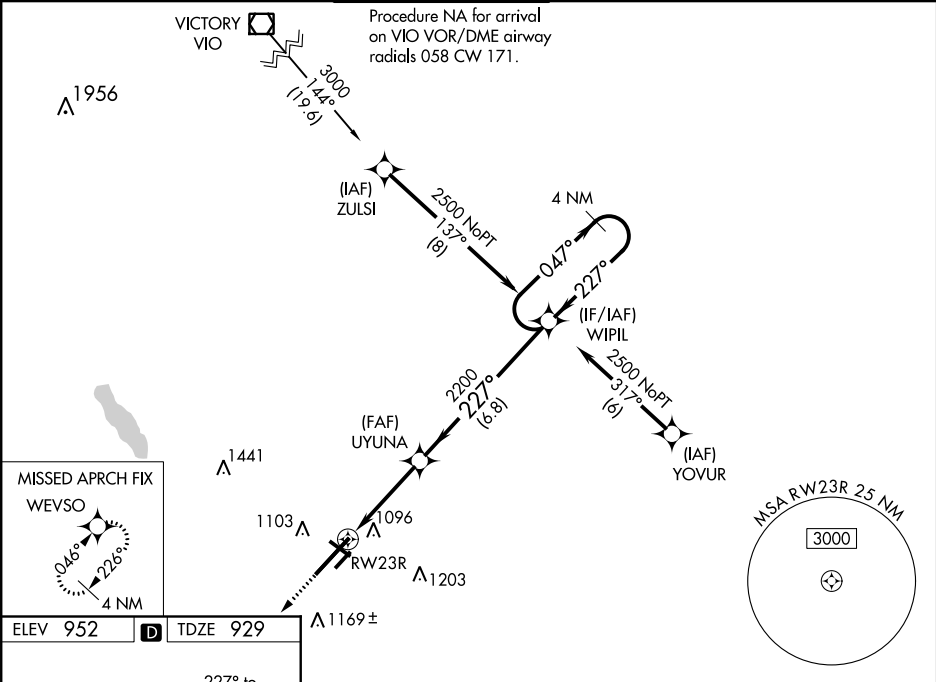


Diagram of the runway layout showing RWY 23R, RWY 13-31, and RWY 5L-23L. Key features include:

- RWY 23R: 227°/10, 996±, 4535, 1000 X 150, 1066±, 4100 X 75.
- RWY 13-31: 977±, 100,