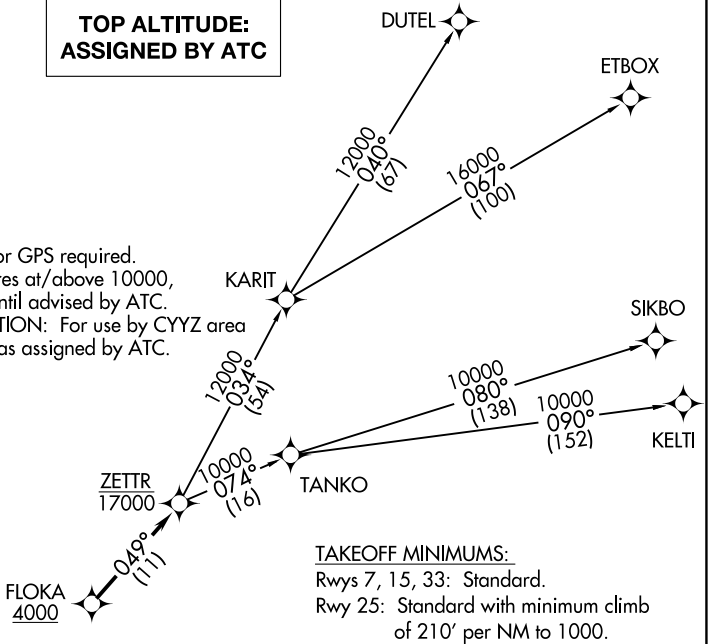


ATIS  
124.875  
GND CON  
121.85  
DETROIT CITY TOWER  
121.3 257.8  
DETROIT DEP CON  
134.3 284.0

TOP ALTITUDE:  
ASSIGNED BY ATC

NOTE: RNAV 1.  
NOTE: RADAR required.  
NOTE: DME/DME/IRU or GPS required.  
NOTE: Turbojet departures at/above 10000,  
maintain 280K until advised by ATC.  
NOTE: TANKO TRANSITION: For use by CYYZ area  
arrivals only, or as assigned by ATC.



TAKEOFF MINIMUMS:

Rwys 7, 15, 33: Standard.  
Rwy 25: Standard with minimum climb  
of 210' per NM to 1000.

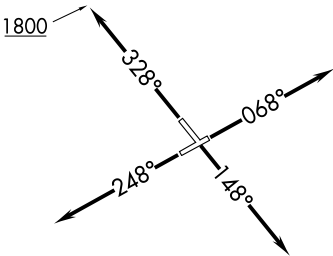


DEPARTURE ROUTE DESCRIPTION

TAKEOFF RUNWAY 7: Climb on heading 068° or as assigned for RADAR vectors to cross FLOKA at or above 4000, thence....  
TAKEOFF RUNWAY 15: Climb on heading 148° or as assigned for RADAR vectors to cross FLOKA at or above 4000, thence....  
TAKEOFF RUNWAY 25: Climb on heading 248° or as assigned for RADAR vectors to cross FLOKA at or above 4000, thence....  
TAKEOFF RUNWAY 33: Climb on heading 328° to 1800 then as assigned for RADAR vectors to cross FLOKA at or above 4000, thence....

....on track 049° to cross ZETTR at or below 17000, then on (transition). Maintain ATC assigned altitude, expect filed altitude 10 minutes after departure.

DUTEL TRANSITION (ZETTR3.DUTEL):  
ETBOX TRANSITION (ZETTR3.ETBOX):  
KELTI TRANSITION (ZETTR3.KELTI):  
SIKBO TRANSITION (ZETTR3.SIKBO):  
TANKO TRANSITION (ZETTR3.TANKO):



NOTE: Chart not to scale.