

(HANBL.HANBL3) 19339

AL-119 (FAA)

HANBL THREE ARRIVAL (RNAV) Transition Routes

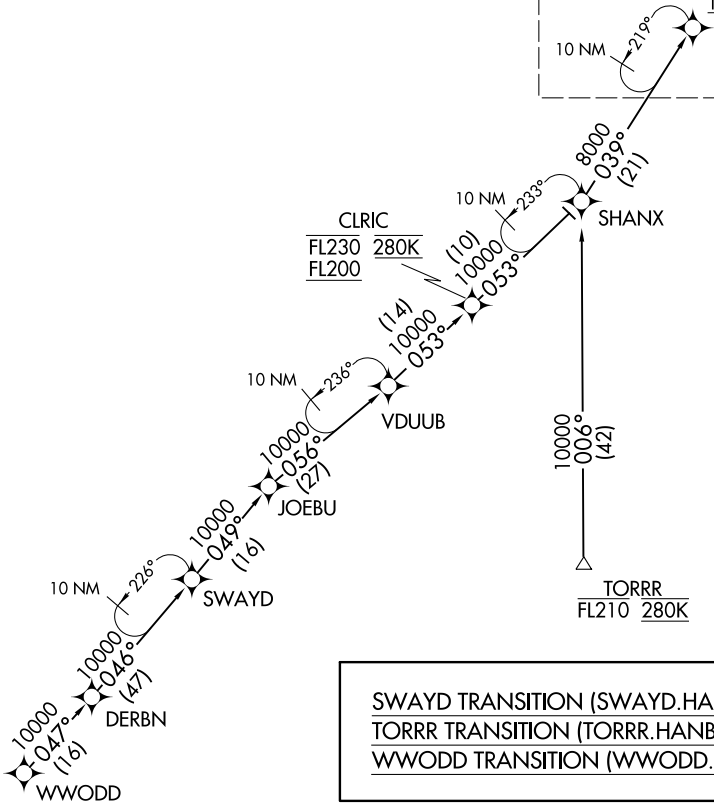
DETROIT METROPOLITAN WAYNE COUNTY (DTW)

DETROIT, MICHIGAN

D-ATIS
133.675
DETROIT APP CON
124.975 284.0

See following page
for arrival routes

HANBL
FL210 280K
17000



- NOTE: RADAR required.
- NOTE: RNAV 1.
- NOTE: DME/DME/IRU or GPS required.
- NOTE: Use Runway 22R transition or as assigned by ATC. Expect runway assignment from Detroit APP CON no later than 10 NM from HEMIE.
- NOTE: For use when DTW landing south or west. When DTW landing north, file and expect the LECTR RNAV STAR.
- NOTE: TORRR Transition for use by CVG/DAY/SDF/LEX terminal area departures at or below FL210 only and ATC use as assigned.

(NARRATIVE ON FOLLOWING PAGE)
(CONTINUED ON FOLLOWING PAGE)

NOTE: Chart not to scale.

HANBL THREE ARRIVAL (RNAV) Transition Routes

(HANBL.HANBL3) 05DEC19

DETROIT METROPOLITAN WAYNE COUNTY (DTW)

DETROIT, MICHIGAN

EC-1, 03 DEC 2020 to 31 DEC 2020

EC-1, 03 DEC 2020 to 31 DEC 2020