


**ILS RWY 21L (SA CAT I & II)**  
DETROIT METROPOLITAN WAYNE COUNTY (DTW)

<p>MALSR</p> 	<p><b>MISSED APPROACH:</b> Climb to 1100 then climbing left turn to 4000 on DXO R-122 to GAAGE/DXO 16 DME and hold, continue climb-in-hold to 4000.</p>
--	---

MALSR

CARLETON  
CRL 115.7  
Chan 104  
ALTERNATE  
MISSED  
APCH FIX

MISSED APCH FIX

113.4 DXO  
R-122  
Chan 81

122°  
302°

GAAGE  
DXO 16

114.3 SVM  
R-123  
Chan 90

DETROIT  
113.4 DXO  $\equiv \ddot{\text{O}} \equiv$

LOCALIZER 111.5  
I-EJR : : :  
Chan 52

113.70 4000

DKO R-122

GAAGE DKO 16

NESBI I-EJR 9.1

BALAS I-EJR 12.2

ROBB I-EJR 15.4

TIGRZ I-EJR 18.5

PUKLE INT I-EJR 5.9

216° 5000

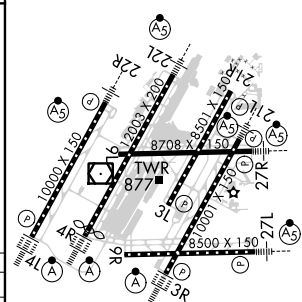
3000 4000 5000

2000

GS 3.00° TCH 55

VGSi and ILS glidepath not coincident (VGSi Angle 3.00/TCH 80).

ELEV	645	<b>D</b>	TDZE	632
------	-----	----------	------	-----



HIRL all runways  
REIL Rwy's 3L, 9L, 9R and 21R  
TDZ/CL Rwy's 3R, 4L, 4R and 22R

SA CATEGORY I & II ILS - SPECIAL AIRCREW  
& AIRCRAFT CERTIFICATION REQUIRED