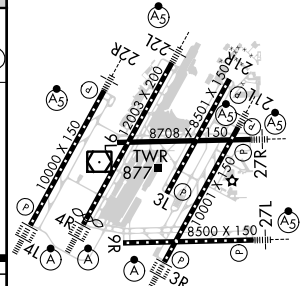
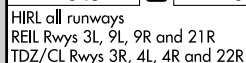


ILS RWY 3R (CAT II & III)
DETROIT METROPOLITAN WAYNE COUNTY (DTW)

MISSED APPROACH: Climb to 1100 then climbing right turn to 4000 on DXO VOR/DME R-122 to GAAGE/DXO 16.1 DME and hold.

CPDLC



CATEGORY II & III ILS - SPECIAL AIRCREW
& AIRCRAFT CERTIFICATION REQUIRED