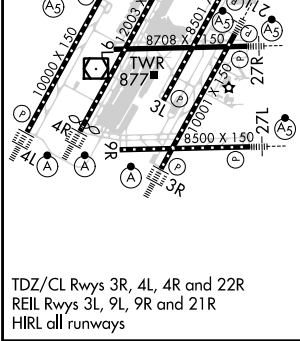
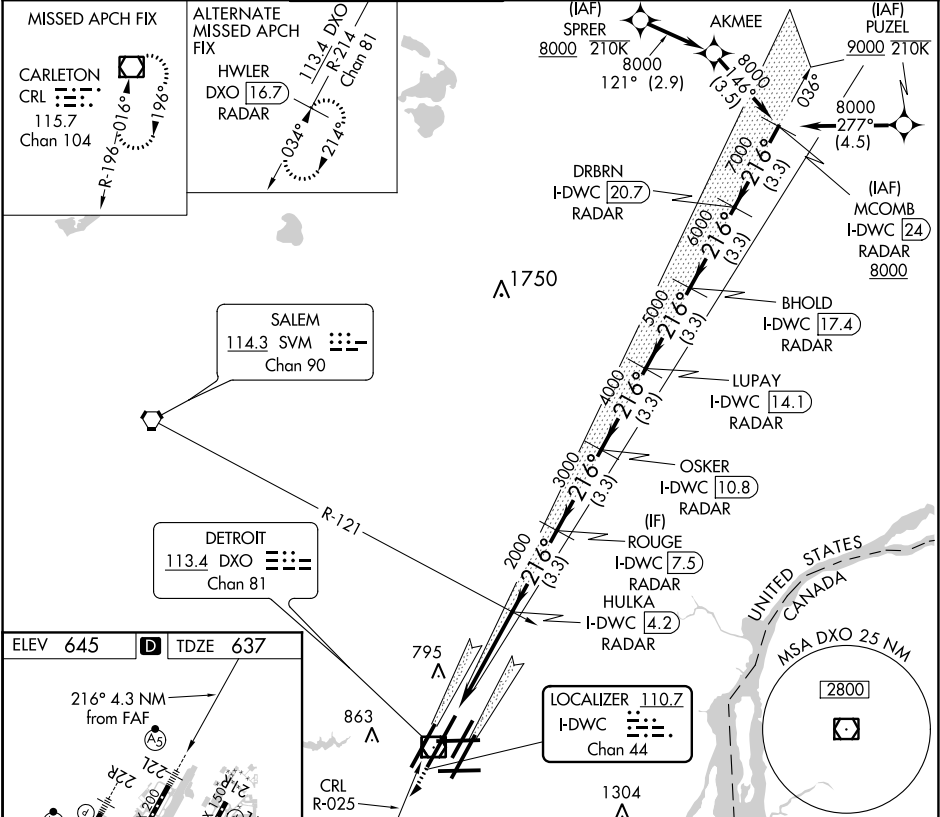


LOC/DME I-DWC 110.7 Chan 44	APP CRS 216°	Rwy Idg TDZE Apt Elev	12003 637 645
---	------------------------	-----------------------------	--

ILS or LOC RWY 22L
DETROIT METROPOLITAN WAYNE COUNTY (DTW)

DME or RADAR required. RNAV 1-DME/DME/IRU or RADAR required for procedure entry.	MALSR 	MISSED APPROACH: Climb to 4000 on heading 216° and CRL VOR/DME R-025 to CRL VOR/DME and hold, continue climb-in-hold to 4000.
Simultaneous approach authorized. #RVR 1800 authorized with use of FD or AP or HUD to DA.		

D-ATIS 133.675	DETROIT APP CON 124.05 284.0	METRO TOWER 128.125 317.725	GND CON 121.8 (NW) 132.725 (SW)	119.45 (NE) 119.25 (SE)	CLNC DEL 120.65	CPDLC
--------------------------	--	---------------------------------------	---	--	---------------------------	-------



4000	CRL R-025	CRL	* LOC only	OSKER I-DWC 10.8	LUPAY I-DWC 14.1	BHOLD I-DWC 17.4	DRBRN I-DWC 20.7	MCOMB I-DWC 24
4000	hdg 216°			ROUGE I-DWC 7.5				
I-DWC DME ANTENNA	HULKA I-DWC 4.2							
I-DWC 0.2	* I-DWC 0.9							
2000								
2000								
3000								
4000								
5000								
6000								
7000								
8000								
216°								
GS 2.85°								
TCH 60								
1 NM	3.3 NM	3.3 NM	3.3 NM	3.3 NM	3.3 NM	3.3 NM	3.3 NM	3.3 NM
CATEGORY	A	B	C	D				
S-ILS 22L#	837/24	200 (200-½)						
S-LOC 22L	1020/24	383 (400-½)	1020/35	383 (400-½)				
CIRCLING	1180-1	535 (600-1)	1180-1½	535 (600-1½)	1240-2	595 (600-2)		

EC-1, 03 DEC 2020 to 31 DEC 2020

EC-1, 03 DEC 2020 to 31 DEC 2020