


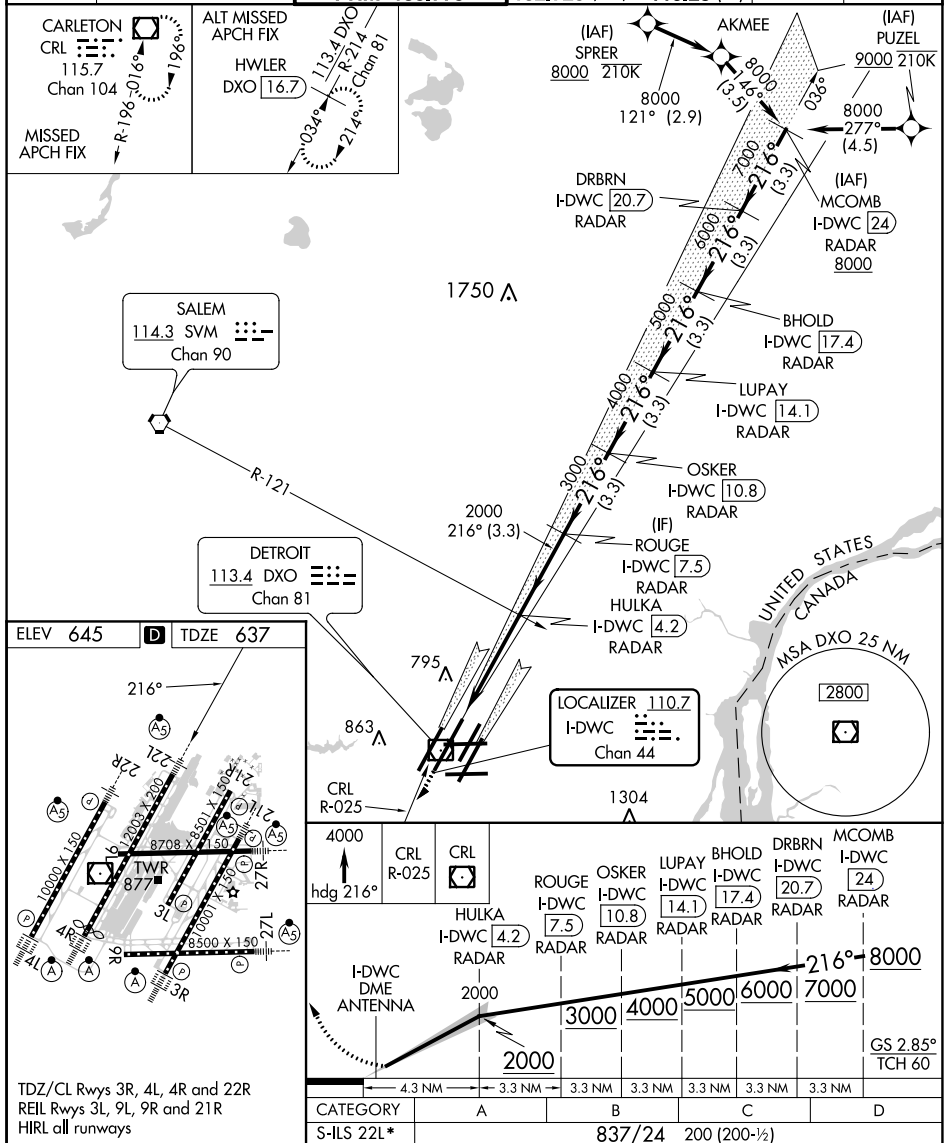
LOC/DME I-DWC <b>110.7</b> Chan <b>44</b>	APP CRS <b>216°</b>	Rwy Idg <b>12003</b> TDZE <b>637</b> Apt Elev <b>645</b>
---	------------------------	--

ILS PRM RWY 22L  
(CLOSE PARALLEL)

DETROIT METROPOLITAN WAYNE COUNTY (DTW)

RNAV 1-GPS.		<b>MISSED APPROACH:</b> Climb to 4000 on heading 216° and CRL VOR/DME R-025 to CRL VOR/DME and hold, continue climb-in-hold to 4000.
RNAV 1-DME/DME/IRU or RADAR required for procedure entry. DME or RADAR required. <b>▼</b> Simultaneous approach authorized. Use of FD or AP required during simultaneous operations. Dual VHF comm required. See additional requirements on AAUP. Procedure NA when glide slope not available. *RVR 1800 authorized with use of FD or AP or HUD to DA.		

D-ATIS 133.675	DETROIT APP CON 124.05 284.0	METRO TOWER 128.125 317.725 PRM 135.775	GND CON (NW) 121.8 (SW) 132.725	119.45 (NE) 119.25 (SE)	CLNC DEL 120.65	CPDLC
-------------------	---------------------------------	---	---------------------------------------	----------------------------	--------------------	-------



DETROIT, MICHIGAN  
Amdt 2 24MAY18

42°13'N-83°21'W DETROIT METROPOLITAN WAYNE COUNTY (DTW)  
ILS PRM RWY 22L (CLOSE PARALLEL)

EC-1, 03 DEC 2020 to 31 DEC 2020

EC-1, 03 DEC 2020 to 31 DEC 2020