

DETROIT, MICHIGAN

AL-119 (FAA)

20254

LOC/DME I-JKI <b>111.95</b>	APP CRS <b>216°</b>	Rwy Idg TDZE <b>642</b>
Chan <b>56 (Y)</b>		Apt Elev <b>645</b>

# ILS PRM Z RWY 22R (SA CAT I & II) (CLOSE PARALLEL)

DETROIT METROPOLITAN WAYNE COUNTY (DTW)

RNAV 1-GPS, HRRON and VALLI: RNAV 1-DME/DME/IRU or GPS required.

Aircraft not DME/DME/IRU or GPS equipped - RADAR required for procedure entry.

▼ Simultaneous approach authorized. Use of FD or AP required during simultaneous operations. Dual VHF Comm required. See additional requirements on AAUP.

SA CAT I: Requires specific OPSPEC, MSPEC, or LOA approval and use of HUD to DH.

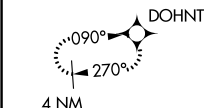
SA CAT II: Reduced lighting: Requires specific OPSPEC, MSPEC, or LOA approval and use of autoland or HUD to touchdown.



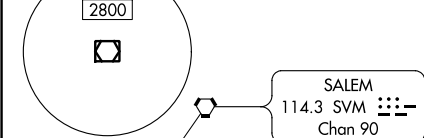
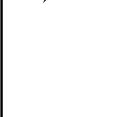
**MISSED APPROACH:** Climb to 1100 then climbing right turn to 4000 on DXO VOR/DME R-297 to DOHNT INT/ DXO 15.5 DME/RADAR and hold.

D-ATIS <b>133.675</b>	DETROIT APP CON <b>124.05 284.0</b>	METRO TOWER <b>135.0 317.725</b> <b>PRM 127.05</b>	GND CON <b>121.8 (NW) 119.45 (NE)</b> <b>132.725 (SW) 119.25 (SE)</b>	CLNC DEL <b>120.65</b>	CPDLC
--------------------------	--	--	---	---------------------------	-------

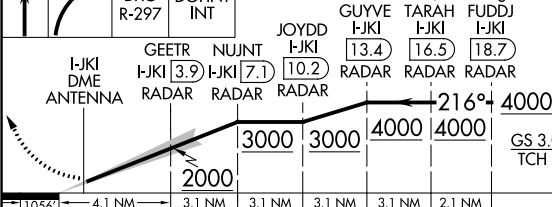
## ALTERNATE MISSED APCH FIX



MSA DXO 25 NM

DOHNT INT  
DXO 15.5  
RADARDETROIT  
113.4 DXO  
Chan 81

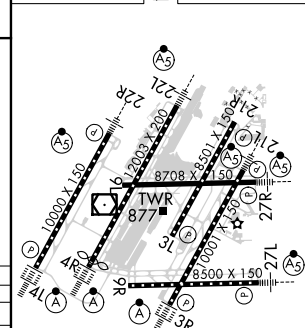
1100 4000  
DXO R-297 DOHNT INT  
VGSI and ILS glidepath not coincident  
(VGSI Angle 3.00/TCH 71).



CATEGORY	A	B	C	D
S-ILS 22R	SA CAT I	RA 148/14	150 DA 792	
S-ILS 22R	SA CAT II	RA 98/12	100 DA 742	

## SA CATEGORY I & II ILS - SPECIAL AIRCREW & AIRCRAFT CERTIFICATION REQUIRED

ELEV	645	TDZE	642
------	-----	------	-----



TDZ/CL Rwy 3R, 4L, 4R and 22R  
REIL Rwy 3L, 9L, 9R and 21R  
HIRL all Rwy's

DETROIT, MICHIGAN

42°13'N-83°21'W

DETROIT METROPOLITAN WAYNE COUNTY (DTW)

Orig-B 30JAN20

## ILS PRM Z RWY 22R (SA CAT I & II)(CLOSE PARALLEL)

EC-1, 03 DEC 2020 to 31 DEC 2020

EC-1, 03 DEC 2020 to 31 DEC 2020