

DETROIT, MICHIGAN

# **ILS PRM Z RWY 4L (CAT II & III)** **(CLOSE PARALLEL)**

DETROIT METROPOLITAN WAYNE COUNTY (DTW)

LOC/DME I-HJT <b>111.95</b> Chan <b>56 (Y)</b>	APP CRS <b>036°</b>	Rwy Idg TDZE Apt Elev <b>10000</b> <b>645</b> <b>645</b>
--	------------------------	---

From GRBAC, SIZOR: RNAV 1-DME/DME/IRU or GPS required. Aircraft not DME/DME/IRU or GPS equipped - RADAR required for procedure entry. DME or RADAR required.

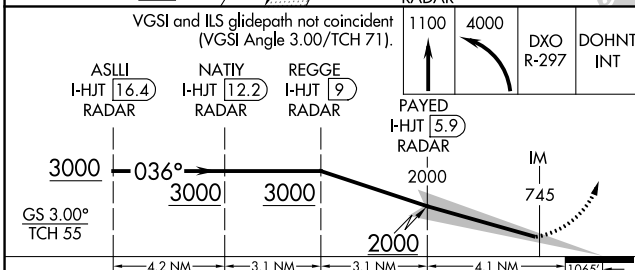
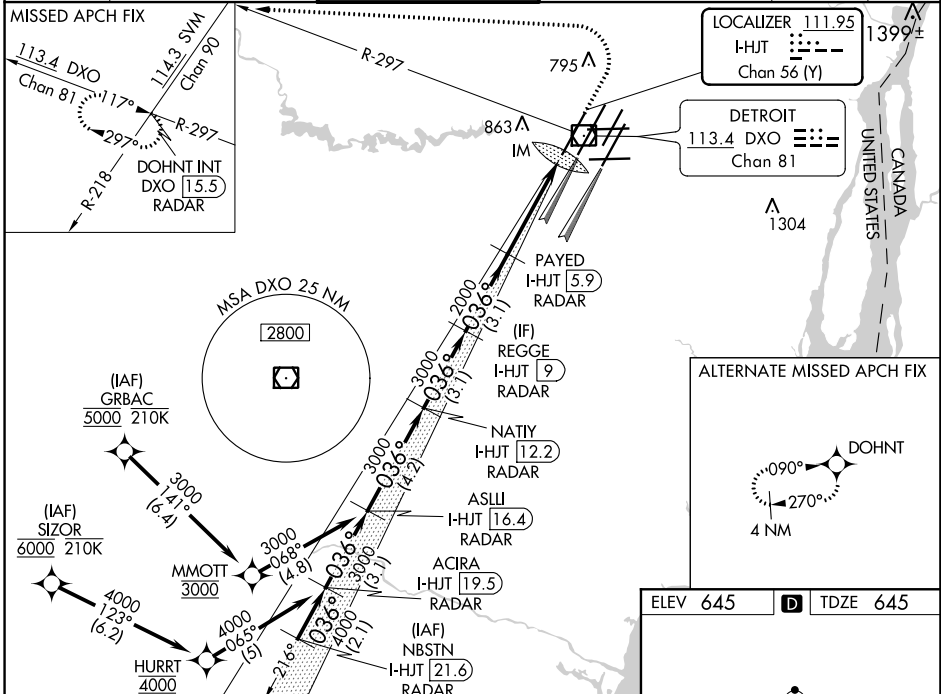
▼ Cat II: RVR 1000 authorized with specific OPSPEC, MSPEC, or LOA approval and use of autoland or HUD to touchdown. Simultaneous approach authorized. Use of FD or AP required during simultaneous operations. Dual VHF Comm required. See additional requirements on AAUP.

ALSF-2



MISSED APPROACH: Climb to 1100 then climbing left turn to 4000 on DXO VOR/ DME R-297 to DOHNT INT/ DXO 15.5 DME/RADAR and hold.

D-ATIS <b>133.675</b>	DETROIT APP CON <b>124.05 284.0</b>	METRO TOWER <b>135.0 317.725</b> <b>PRM 127.05</b>	GND CON <b>121.8 (NW) 119.45 (NE)</b> <b>132.725 (SW) 119.25 (SE)</b>	CLNC DEL <b>120.65</b>	CPDLC
--------------------------	--	--	---	---------------------------	-------



CATEGORY	A	B	C	D
S-ILS 4L	CAT II	RA 101/12	100 DA 745	
S-ILS 4L	CAT III	RVR 06		

## **CATEGORY II & III ILS - SPECIAL AIRCREW** **& AIRCRAFT CERTIFICATION REQUIRED**

DETROIT, MICHIGAN

Orig-B 30JAN20

42°13'N-83°21'W

DETROIT METROPOLITAN WAYNE COUNTY (DTW)

# **ILS PRM Z RWY 4L (CAT II & III) (CLOSE PARALLEL)**

TDZ/CL Rwy 3R, 4L, 4R and 22R  
REIL Rwy 3L, 9L, 9R and 21R  
HIRL all runways