

LOC/DME I-BZB 111.75 Chan 54 (Y)	APP CRS 213°	Rwy Idg TDZE Apt Elev	10000 642 645
------------------------------------------------------	------------------------	-----------------------------	------------------------------------------

ILS Y RWY 22R
DETROIT METROPOLITAN WAYNE COUNTY (DTW)

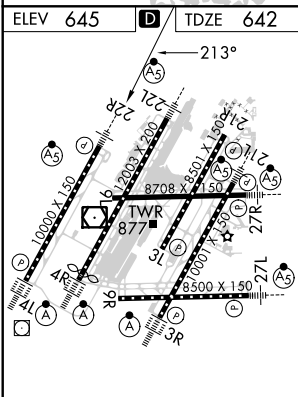
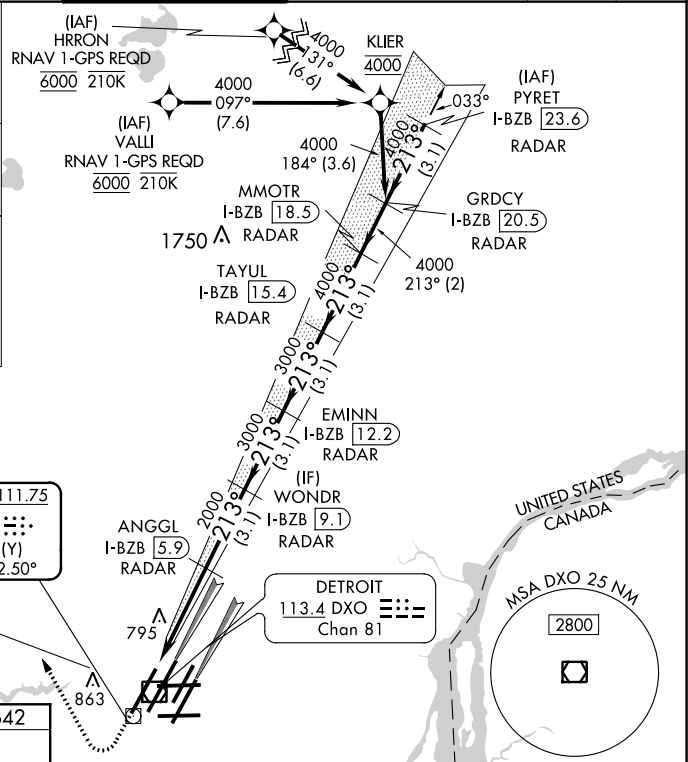
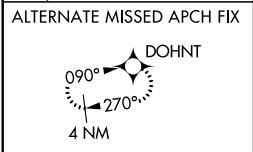
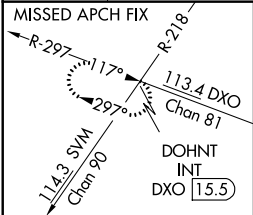
RNAV 1-GPS, HRRON and VALLI: RNAV 1-DME/DME/IRU or GPS required. Aircraft not DME/DME/IRU or GPS equipped - RADAR required for procedure entry.



MISSED APPROACH: Climb to 1100 then climbing right turn to 4000 on DXO VOR/DME R-297 to DOHNT INT/DXO 15.5 DME and hold.

Simultaneous approach authorized.

D-ATIS 133.675	DETROIT APP CON 124.05 284.0	METRO TOWER 135.0 317.725	GND CON 121.8 (NW) 119.45 (NE) 132.725 (SW) 119.25 (SE)	CLNC DEL 120.65	CPDLC
--------------------------	----------------------------------------	-------------------------------------	-----------------------------------------------------------------------------	---------------------------	-------



TDZ/CL Rwy 3R, 4L, 4R and 22R
REIL Rwy 3L, 9L, 9R and 21R
HIRL all runways

1100	4000	DXO R-297	DOHNT INT	VGSI and ILS glidepath not coincident (VGSI Angle 3.00/TCH 71).			
		WONDR I-BZB 9.1		TAYUL I-BZB 15.4		GRDCY I-BZB 20.5	
ANGGL I-BZB 5.9		EMINN I-BZB 12.2		MMOTR I-BZB 18.5		RADAR	
RADAR		RADAR		RADAR		RADAR	
2000		3000		3000		4000	
4.1 NM		3.1 NM		3.1 NM		3.1 NM	
2000		3000		3000		4000	
4.1 NM		3.1 NM		3.1 NM		3.1 NM	
2000		3000		3000		4000	
4.1 NM		3.1 NM		3.1 NM		3.1 NM	
2000		3000		3000		4000	
4.1 NM		3.1 NM		3.1 NM		3.1 NM	
2000		3000		3000		4000	
4.1 NM		3.1 NM		3.1 NM		3.1 NM	
2000		3000		3000		4000	
4.1 NM		3.1 NM		3.1 NM		3.1 NM	
2000		3000		3000		4000	
4.1 NM		3.1 NM		3.1 NM		3.1 NM	
2000		3000		3000		4000	
4.1 NM		3.1 NM		3.1 NM		3.1 NM	
2000		3000		3000		4000	
4.1 NM		3.1 NM		3.1 NM		3.1 NM	
2000		3000		3000		4000	
4.1 NM		3.1 NM		3.1 NM		3.1 NM	
2000		3000		3000		4000	
4.1 NM		3.1 NM		3.1 NM		3.1 NM	
2000		3000		3000		4000	
4.1 NM		3.1 NM		3.1 NM		3.1 NM	
2000		3000		3000		4000	
4.1 NM		3.1 NM		3.1 NM		3.1 NM	
2000		3000		3000		4000	
4.1 NM		3.1 NM		3.1 NM		3.1 NM	
2000		3000		3000		4000	
4.1 NM		3.1 NM		3.1 NM		3.1 NM	
2000		3000		3000		4000	
4.1 NM		3.1 NM		3.1 NM		3.1 NM	
2000		3000		3000		4000	
4.1 NM		3.1 NM		3.1 NM		3.1 NM	
2000		3000		3000		4000	
4.1 NM		3.1 NM		3.1 NM		3.1 NM	
2000		3000		3000		4000	
4.1 NM		3.1 NM		3.1 NM		3.1 NM	
2000		3000		3000		4000	
4.1 NM		3.1 NM		3.1 NM		3.1 NM	
2000		3000		3000		4000	
4.1 NM		3.1 NM		3.1 NM		3.1 NM	
2000		3000		3000		4000	
4.1 NM		3.1 NM		3.1 NM		3.1 NM	
2000		3000		3000		4000	
4.1 NM		3.1 NM		3.1 NM		3.1 NM	
2000		3000		3000		4000	
4.1 NM		3.1 NM		3.1 NM		3.1 NM	
2000		3000		3000		4000	
4.1 NM		3.1 NM		3.1 NM		3.1 NM	
2000		3000		3000		4000	
4.1 NM		3.1 NM		3.1 NM		3.1 NM	
2000		3000		3000		4000	
4.1 NM		3.1 NM		3.1 NM		3.1 NM	
2000		3000		3000		4000	
4.1 NM		3.1 NM		3.1 NM		3.1 NM	
2000		3000		3000		4000	
4.1 NM		3.1 NM		3.1 NM		3.1 NM	
2000		3000		3000		4000	
4.1 NM		3.1 NM		3.1 NM		3.1 NM	
2000		3000		3000		4000	
4.1 NM		3.1 NM		3.1 NM		3.1 NM	
2000		3000		3000		4000	
4.1 NM		3.1 NM		3.1 NM		3.1 NM	
2000		3000		3000		4000	
4.1 NM		3.1 NM		3.1 NM		3.1 NM	
2000		3000		3000		4000	
4.1 NM		3.1 NM		3.1 NM		3.1 NM	
2000		3000		3000		4000	
4.1 NM		3.1 NM		3.1 NM		3.1 NM	
2000		3000		3000		4000	
4.1 NM		3.1 NM		3.1 NM		3.1 NM	
2000		3000		3000		4000	
4.1 NM		3.1 NM		3.1 NM		3.1 NM	
2000		3000		3000		4000	
4.1 NM		3.1 NM		3.1 NM		3.1 NM	
2000		3000		3000		4000	
4.1 NM		3.1 NM		3.1 NM		3.1 NM	
2000		3000		3000		4000	
4.1 NM		3.1 NM		3.1 NM		3.1 NM	
2000		3000		3000		4000	
4.1 NM		3.1 NM		3.1 NM		3.1 NM	
2000		3000		3000		4000	
4.1 NM		3.1 NM		3.1 NM		3.1 NM	
2000		3000		3000		4000	
4.1 NM		3.1 NM		3.1 NM		3.1 NM	
2000		3000		3000		4000	
4.1 NM		3.1 NM		3.1 NM		3.1 NM	
2000		3000		3000		4000	
4.1 NM		3.1 NM		3.1 NM		3.1 NM	
2000		3000		3000		4000	
4.1 NM		3.1 NM		3.1 NM		3.1 NM	
2000		3000		3000		4000	
4.1 NM		3.1 NM		3.1 NM		3.1 NM	
2000		3000		3000		4000	
4.1 NM		3.1 NM		3.1 NM		3.1 NM	
2000		3000		3000		4000	
4.1 NM		3.1 NM		3.1 NM		3.1 NM	
2000		3000		3000		4000	
4.1 NM		3.1 NM		3.1 NM		3.1 NM	
2000		3000		3000		4000	
4.1 NM		3.1 NM		3.1 NM		3.1 NM	
2000		3000		3000		4000	
4.1 NM							