

| | | |
|---|------------------------|---|
| LOC/DME I-HJT 111.95 Chan 56(Y) | APP CRS 036° | Rwy Idg TDZE Apt Elev 10000 645 645 |
|---|------------------------|---|

ILS Z RWY 4L (CAT II & III)
DETROIT METROPOLITAN WAYNE COUNTY (DTW)

From GRBAC, SIZOR: RNAV 1-DME/DME/IRU or GPS required. Aircraft not DME/DME/IRU or GPS equipped - RADAR required for procedure entry. DME or RADAR required.

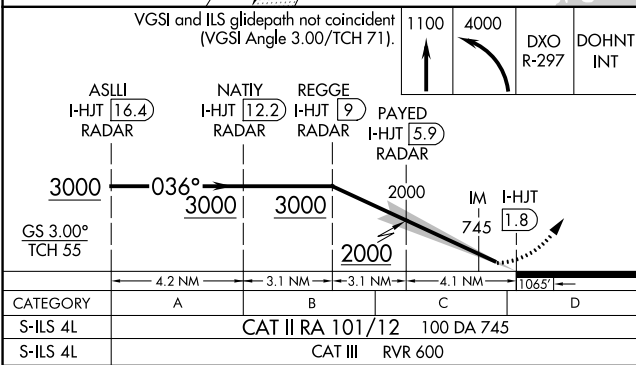
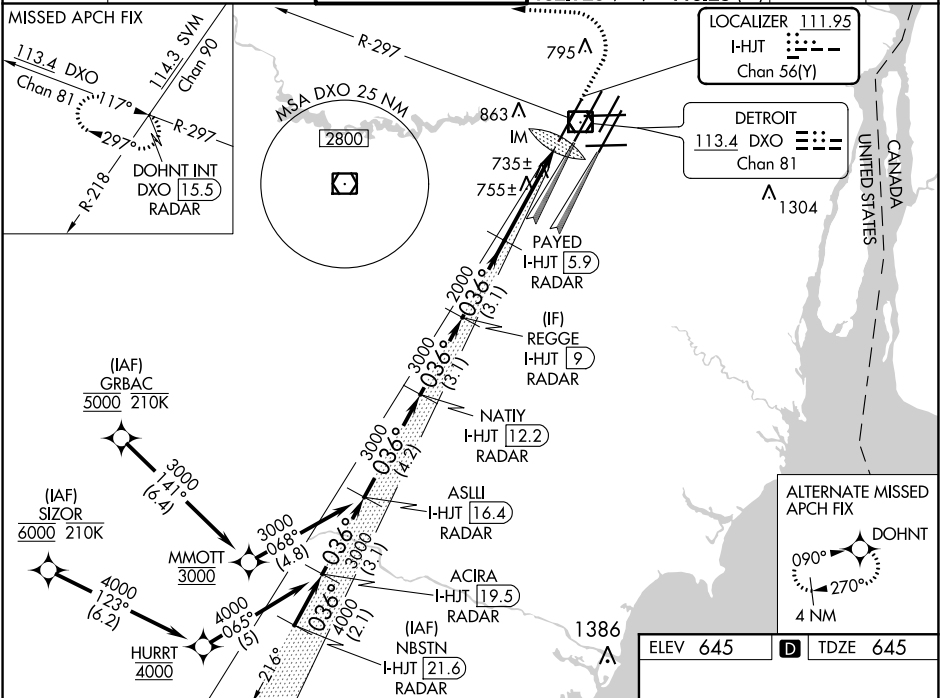
Simultaneous approach authorized. CAT II: RVR 1000 authorized with specific OPSPEC, MSPEC, or LOA approval and use of autoland or HUD to touchdown.

ALS-F-2



MISSED APPROACH: Climb to 1100 then climbing left turn to 4000 on DXO VOR/DME R-297 to DOHNT INT/DXO 15.5 DME/RADAR and hold.

| | | | | | | |
|--------------------------|--|-------------------------------------|---|---|---------------------------|-------|
| D-ATIS 133.675 | DETROIT APP CON 124.05 284.0 | METRO TOWER 135.0 317.725 | GND CON 121.8 (NW) 132.725 (SW) | CON 119.45 (NE) 119.25 (SE) | CLNC DEL 120.65 | CPDLC |
|--------------------------|--|-------------------------------------|---|---|---------------------------|-------|



CATEGORY II & III ILS - SPECIAL AIRCREW & AIRCRAFT CERTIFICATION REQUIRED

