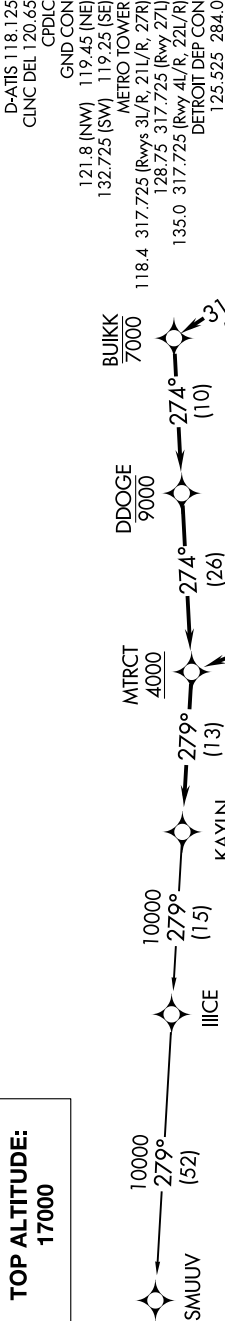


EC-1, 03 DEC 2020 to 31 DEC 2020

TOP ALTITUDE:  
17000



TAKEOFF MINIMUMS  
Rwys 3L/R, 4L/R, 21L/R, 22L/R, 27L/R, 27R: Standard with minimum climb of 500' per NM to 1146.

- NOTE: RNAV 1.
- NOTE: RADAR required.
- NOTE: DME/DME/IRU or GPS required.
- NOTE: Turbojet departures at/above 10000, maintain 280K until advised by ATC.
- NOTE: If unable to accept 500' per NM climb rate, advise clearance delivery on initial contact.

(NARRATIVE ON FOLLOWING PAGE)

NOTE: Chart not to scale.

EC-1, 03 DEC 2020 to 31 DEC 2020