

NOTE: RADAR required.

NOTE: RNAV 1.

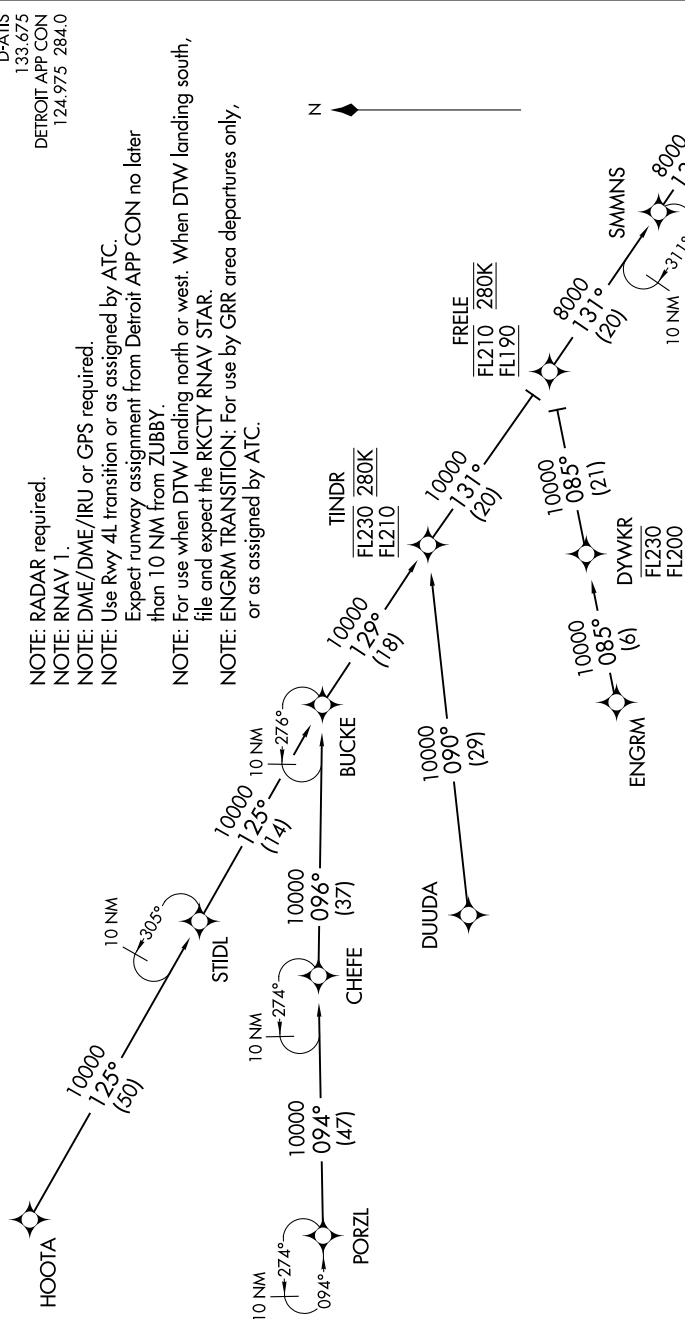
NOTE: DME/DME/IRU or GPS required.

NOTE: Use Rwy 4L transition or as assigned by ATC.

Expect runway assignment from Detroit APP CON no later than 10 NM from ZUBBY.

NOTE: For use when DTW landing north or west. When DTW landing south, file and expect the RKCTY RNAV STAR.

NOTE: ENGRM TRANSITION: For use by GRR area departures only, or as assigned by ATC.



DUUDA TRANSITION (DUUDA.KKISS2)
ENGRM TRANSITION (ENGRM.KKISS2)
HOOTA TRANSITION (HOOTA.KKISS2)
PORZL TRANSITION (PORZL.KKISS2)

(NARRATIVE ON FOLLOWING PAGE)

NOTE: Chart not to scale.

See following
page for
arrival route