

WAAS CH 86220 W27A	APP CRS 276°	Rwy Idg 8708 TDZE 635 Apt Elev 645
--	------------------------	---

RNAV (GPS) RWY 27R

DETROIT METROPOLITAN WAYNE COUNTY (DTW)

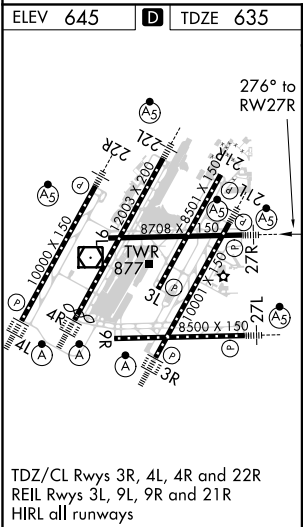
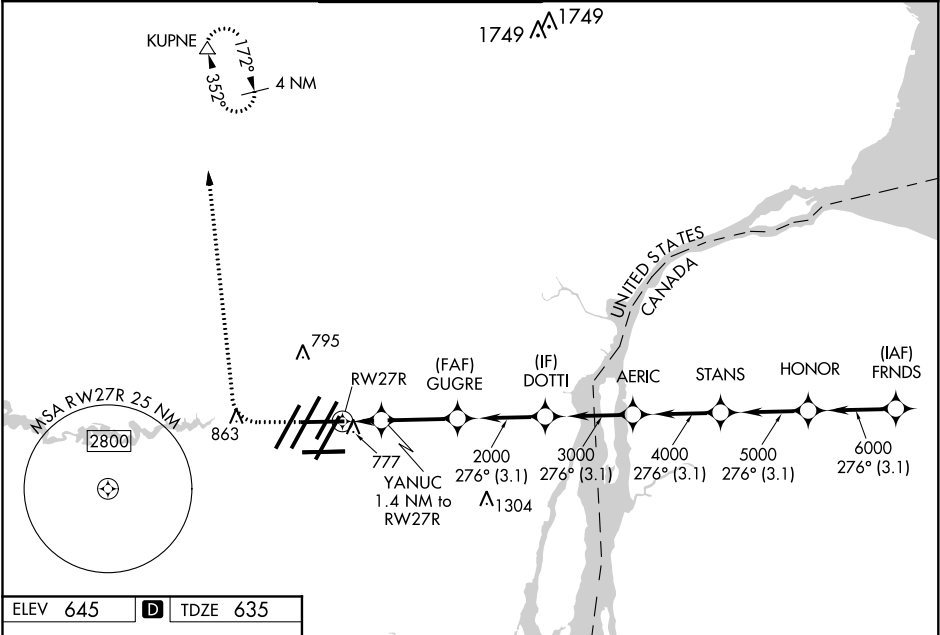
RNP APCH

▼ For uncompensated Baro-VNAV systems, LNAV/VNAV NA below -20°C (-4°F) or above 54°C (130°F). For inop ALS, increase LNAV Cat C and D visibility to RVR 6000. Simultaneous approach authorized. LNAV procedure NA during simultaneous operations. Use of FD or AP required during simultaneous operations.
** RVR 1800 authorized with use of FD or AP or HUD to DA.

MALSR

MISSED APPROACH: Climb to 1100 then climbing right turn to 4000 direct KUPNE and hold, continue climb-in-hold to 4000.

D-ATIS 133.675	DETROIT APP CON 125.15 284.0	METRO TOWER 118.4 317.725	GND CON 121.8 (NW) 119.45 (NE) 132.725 (SW) 119.25 (SE)	CLNC DEL 120.65	CPDLC
--------------------------	--	-------------------------------------	---	---------------------------	-------



1100 4000 KUPNE VGSi and RNAV glidepath not coincident (VGSi Angle 3.00/TCH 61).

*LNAV only.

YANUC 1.4 NM to RW27R

1120* 2000

1.4 NM 2.7 NM 3.1 3.1 3.1 3.1 NM

CATEGORY	A	B	C	D
LPV DA**	835/24		200 (200-½)	
LNAV/VNAV DA	938/24		303 (300-½)	
LNAV MDA	1040/24 405 (400-½)		1040/40 405 (400-¾)	
C CIRCLING	1180-1 535 (600-1)		1180-1½ 535 (600-1½) 1240-2 595 (600-2)	

EC-1, 03 DEC 2020 to 31 DEC 2020

EC-1, 03 DEC 2020 to 31 DEC 2020