

RNAV (GPS) PRM Y RWY 4L  
(CLOSE PARALLEL)

DETROIT METROPOLITAN WAYNE COUNTY (DTW)

WAAS CH <b>73039</b> <b>W04A</b>	APP CRS <b>038°</b>	Rwy Idg <b>10000</b> TDZE <b>645</b> Apt Elev <b>645</b>
--	------------------------	--

RNP APCH.

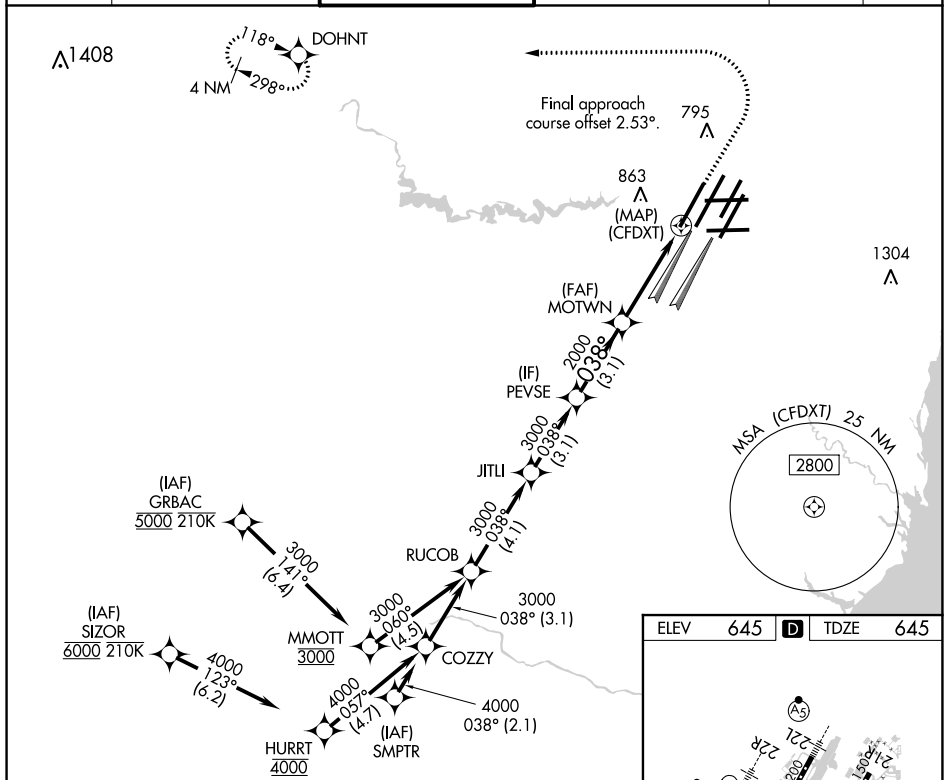
**T** Rwy 4L and 4R separated by 3000 feet centerline to centerline. For uncompensated Baro-VNAV systems, LNAV/VNAV NA below -19°C or above 54°C. Simultaneous approach authorized. Use of FD or AP required during simultaneous operations. Dual VHF comm required. See additional requirements on AAUP.

ALSF-2

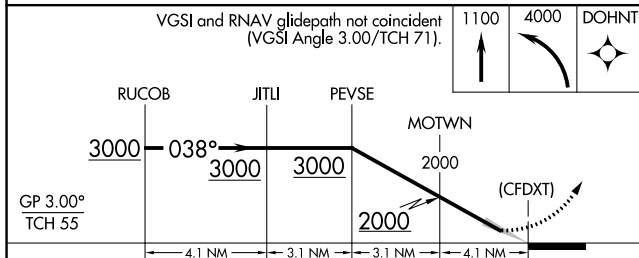


**MISSED APPROACH:**  
Climb to 1100 then  
climbing left turn to 4000  
direct DOHNT and hold.

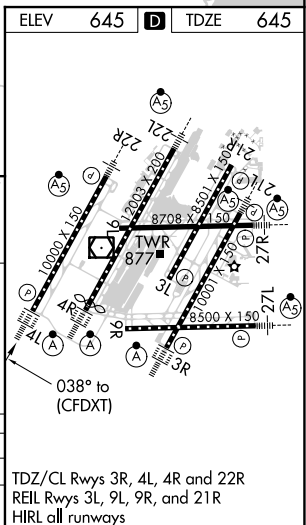
D-ATIS 133.675	DETROIT APP CON 124.05 284.0	METRO TOWER 135.0 317.725 PRM 127.05	GND CON 121.8 (NW) 119.45 (NE) 132.725 (SW) 119.25 (SE)	CLNC DEL 120.65	CPDLC
-------------------	---------------------------------	--	---	--------------------	-------



VGS1 and RNAV glidepath not coincident (VGS1 Angle 3.00/TCH 71).	1100	4000	DOHNT
---	------	------	-------



CATEGORY		A	B	C	D
LPV	DA	895/24		250 (300-½)	
INAV/ VNAV	DA	1068/45		423 (500-¾)	



DETROIT, MICHIGAN

42°13'N-83°21'W

DETROIT METROPOLITAN WAYNE COUNTY (DTW)

Orig-A 10OCT19

RNAV (GPS) PRM Y RWY 4L (CLOSE PARALLEL)

EC-1, 03 DEC 2020 to 31 DEC 2020

EC-1, 03 DEC 2020 to 31 DEC 2020