

WAAS CH <b>42939</b> <b>W22B</b>	APP CRS <b>213°</b>	Rwy Idg TDZE Apt Elev	<b>10000</b> <b>642</b> <b>645</b>
--	------------------------	-----------------------------	--

**RNAV (GPS) Y RWY 22R**  
DETROIT METROPOLITAN WAYNE COUNTY (DTW)

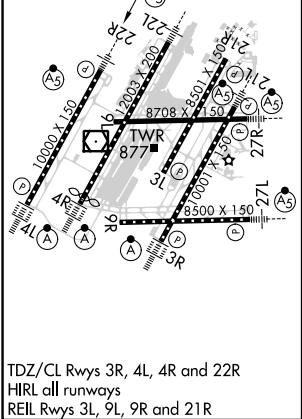
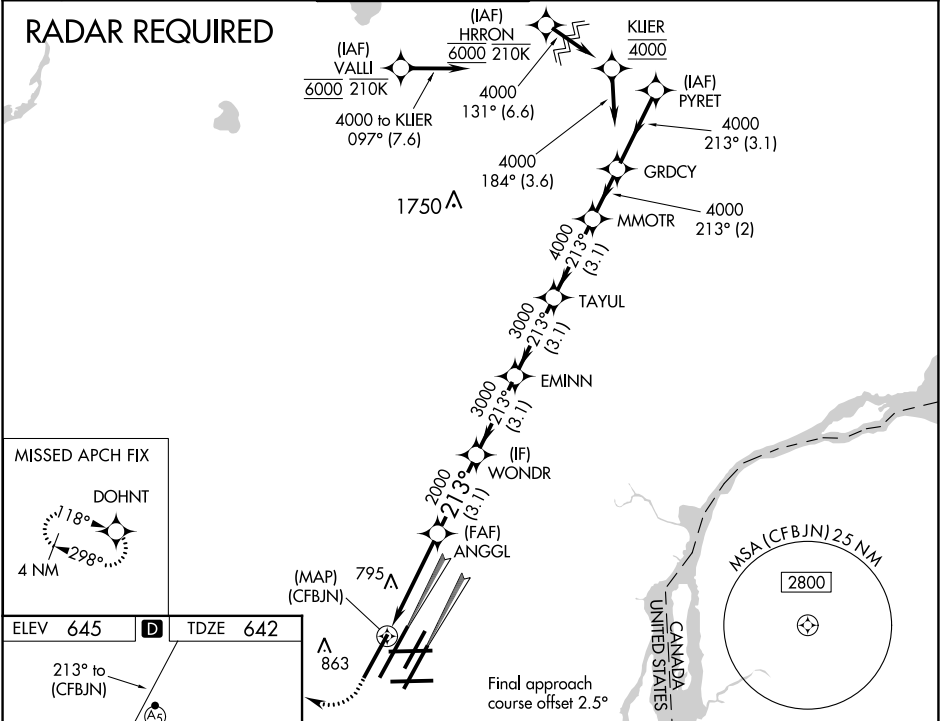
▼ For uncompensated Baro-VNAV systems, LNAV/VNAV NA below -19°C (-2°F) or above 54°C (130°F). DME/DME RNP-0.3 NA. Simultaneous approach authorized. LNAV procedure NA during simultaneous operations. Use of FD or AP providing RNAV track guidance required during simultaneous operations.

MALSR

MISSED APPROACH: Climb to 1100 then climbing right turn to 4000 direct DOHNT and hold.

D-ATIS <b>133.675</b>	DETROIT APP CON <b>124.05 284.0</b>	METRO TOWER <b>135.0 317.725</b>	GND CON <b>121.8</b> (NW) <b>119.45</b> (NE) <b>132.725</b> (SW) <b>119.25</b> (SE)	CLNC DEL <b>120.65</b>	CPDLC
--------------------------	--	-------------------------------------	---	---------------------------	-------

**RADAR REQUIRED**



1100	4000	DOHNT	VGSI and RNAV glidepath not coincident (VGSI Angle 3.00/TCH 71).							
			TAYUL MMOTR GRDCY							
*LNAV only.										
CATEGORY			A		B		C		D	
LPV DA					892/24		250 (300-½)			
LNAV/ VNAV DA					1050/45		408 (500-¾)			
LNAV MDA			1060/24		418 (500-½)		1060/40		418 (500-¾)	
C CIRCLING			1180-1		535 (600-1)		1180-1½ 535 (600-1½)		1240-2 595 (600-2)	