

WAAS CH <b>99601</b> <b>W22A</b>	APP CRS <b>216°</b>	Rwy Idg <b>12003</b> TDZE <b>637</b> Apt Elev <b>645</b>
--	------------------------	--

RNAV (GPS) Z RWY 22L  
DETROIT METROPOLITAN WAYNE COUNTY (DTW)

RNP APCH.

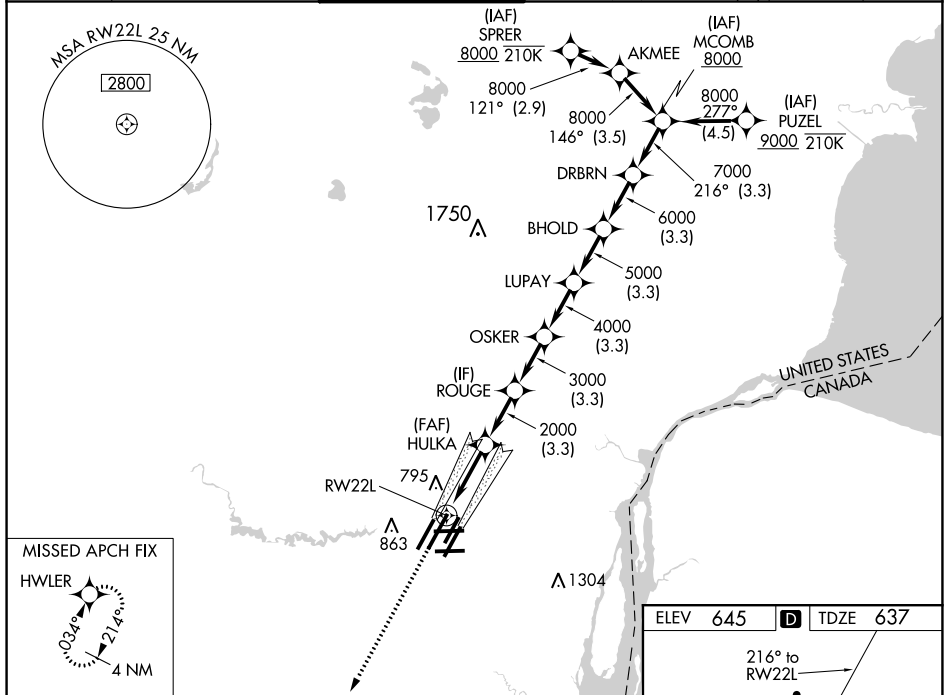
**T** For uncompensated Baro-VNAV systems, LNAV/VNAV NA below -10°C (14°F) or above 54°C (130°F). Simultaneous approach authorized. LNAV procedure NA during simultaneous operations. Use of FD or AP required during simultaneous operations. For inop ALS, increase LNAV/VNAV all Cats visibility to RVR 4500 and LNAV Cat C/D visibility to 1½ SM. #RVR 1800 authorized with use of FD or AP or HUD to DA.


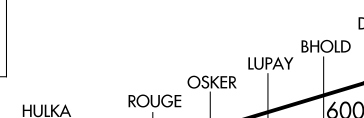
MALSR

**MISSED APPROACH:**  
Climb to 4000 direct  
HWLER and hold.

D-ATIS <b>133.675</b>	DETROIT APP CON <b>124.05 284.0</b>	METRO TOWER <b>128.125 317.725</b>	GND CON <b>121.8 (NW) 119.45 (NE)</b> <b>132.725 (SW) 119.25 (SE)</b>	CLNC DEL <b>120.65</b>	CPDLC
--------------------------	--	---------------------------------------	---	---------------------------	-------



4000 ↑	HWLER 											
* LNAV only.		HULKA 2000 * 1.3 NM to RW22L RW22L 1300 3 NM 3.3 NM ROUGE 3000 3.3 NM OSKER 4000 3.3 NM LUPAY 5000 3.3 NM BHOLD 6000 3.3 NM DRBRN 7000 3.3 NM MCOMB 8000 3.3 NM GP 2.85° TCH 60										
CATEGORY		A			B			C			D	
LPV	DA #	837/24			200 (200-½)							
LNAV/ VNAV	DA	938/24			301 (300-½)							
LNAV	MDA	1100/24 463 (500-½)			1100/50 463 (500-¾)							
<b>C</b> CIRCLING		1180-1 535 (600-1)			1180-1½ 535 (600-1½)			1240-2 595 (600-2)				