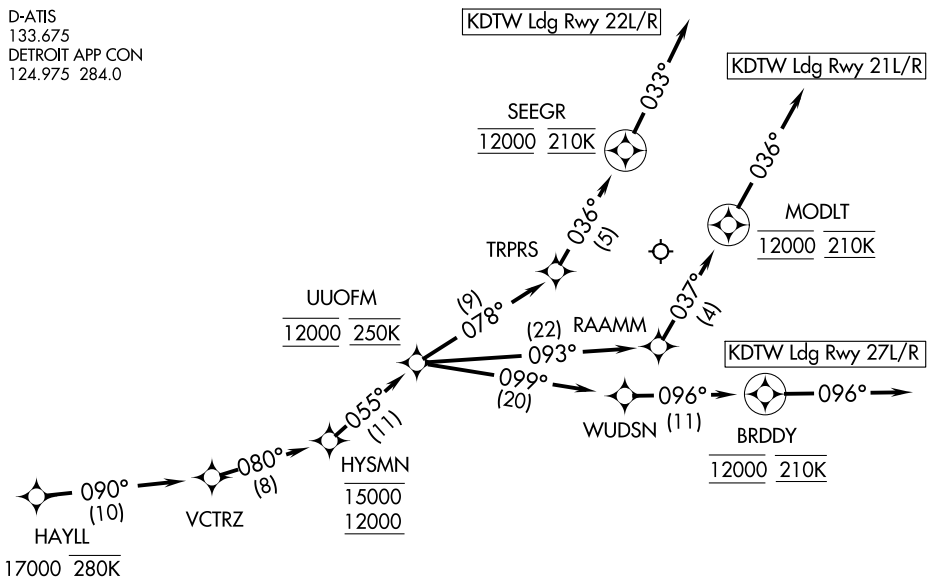


D-ATIS  
133.675  
DETROIT APP CON  
124.975 284.0



NOTE: RADAR required.

NOTE: RNAV 1.

NOTE: DME/DME/IRU or GPS required.

NOTE: Use Runway 22R transition or as assigned by ATC.

Expect runway assignment from Detroit APP CON  
no later than 10 NM from UUOFM.

NOTE: For use when DTW landing south or west. When DTW landing north,  
file and expect the HAYLL RNAV STAR.

NOTE: For use by flights departing KMDW, KSBN, KAZO, KMCI, KLAS, KLAX,  
KPHX, KSAN, AND KSNA area airports only, or as assigned by ATC.

NOTE: Chart not to scale.

### ARRIVAL ROUTE DESCRIPTION

From HAYLL on track 090° to VCTRZ, then on track 080° to cross HYSMN between  
12000 and 15000, then on track 055° to cross UUOFM at 12000 and at 250K.

LANDING RUNWAY 21L/R: From UUOFM on track 093° to RAAMM, then on track 037°  
to cross MODLT at 12000 and at 210K, then on track 036°. Expect RADAR vectors to  
final approach course.

LANDING RUNWAY 22L/R: From UUOFM on track 078° to TRPRS, then on track 036°  
to cross SEEGR at 12000 and at 210K, then on track 033°. Expect RADAR vectors to  
final approach course.

LANDING RUNWAY 27L/R: From UUOFM on track 099° to WUDSN, then on track 096°  
to cross BRDDY at 12000 and at 210K, then on track 096°. Expect RADAR vectors to  
final approach course.