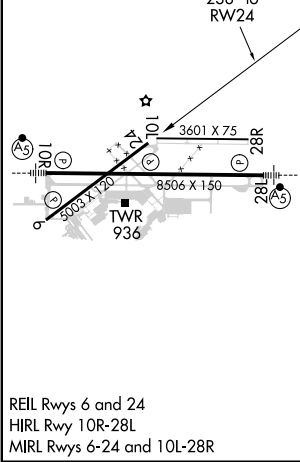
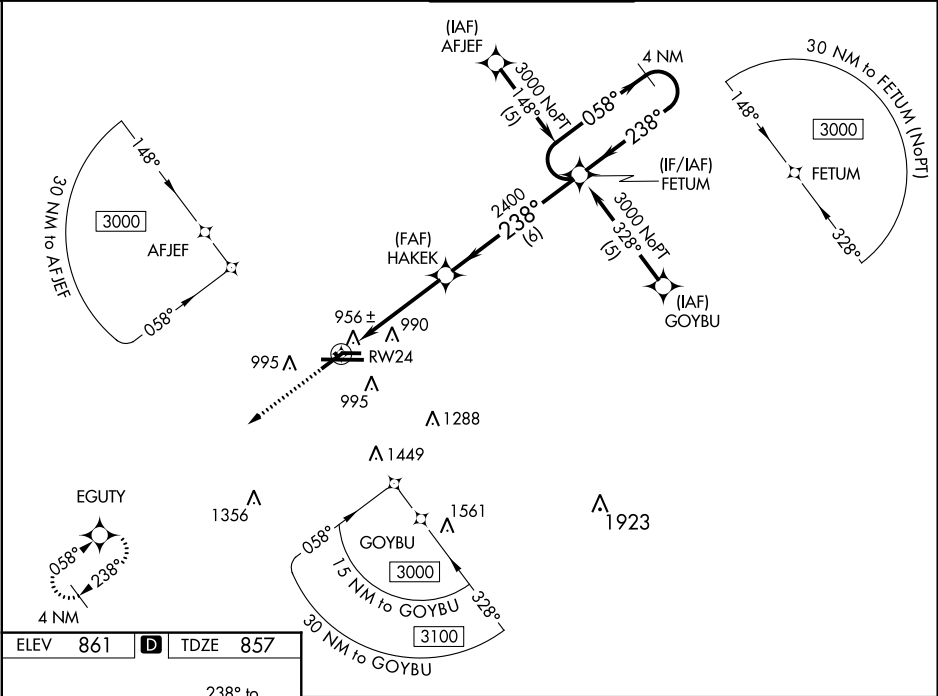


WAAS CH 50413 W24A	APP CRS 238°	Rwy Idg TDZE Apt Elev	5002 857 861
--	------------------------	-----------------------------	---

RNAV (GPS) RWY 24
CAPITAL REGION INTL (LAN)

For uncompensated Baro-VNAV systems, LNAV/VNAV NA below -16°C (4°F) or above 47°C (116°F). DME/DME RNP-0.3 NA. Visibility reduction by helicopters NA.			MISSED APPROACH: Climb to 3000 direct EGUTY and hold.	
ATIS 119.75	GREAT LAKES APP CON ★ 118.65 226.4	LANSING TOWER 119.9 240.9	GND CON 121.9	CLNC DEL 123.675



ELEV 861 D TDZE 857		3000 EGUTY		4 NM Holding Pattern	
*LNAV only		*1.1 NM to RWY 24		GP 3.00° TCH 42	
RWY 24		HAKEK		FETUM	
1.1		3.6 NM		6 NM	
CATEGORY	A	B	C	D	
LPV DA	1215-1¼ 358 (400-1¼)				
LNAV/VNAV DA	1254-1½ 397 (400-1½)				
LNAV MDA	1240-1 383 (400-1)			1240-1¼ 383 (400-1¼)	
CIRCLING	1380-1 519 (600-1)		1380-1½ 519 (600-1½)		1440-2 579 (600-2)

EC-1, 03 DEC 2020 to 31 DEC 2020

EC-1, 03 DEC 2020 to 31 DEC 2020