

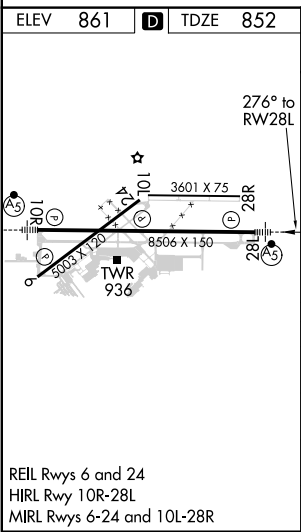
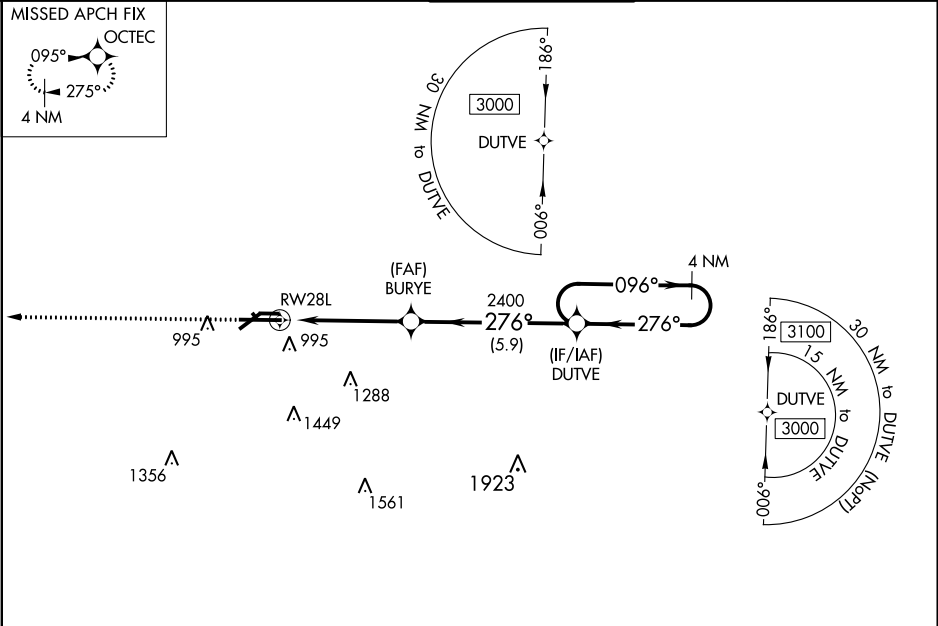


WAAS CH 40414 W28A	APP CRS 276°	Rwy Idg TDZE 852 Apt Elev 861
--	------------------------	---

RNAV (GPS) RWY 28L
CAPITAL REGION INTL (L.A.N)

	For uncompensated Baro-VNAV systems, LNAV/VNAV NA below -19°C (-2°F) or above 54°C (130°F). DME/DME RNP-0.3 NA. Circling Rwy 10L, 28R NA at night. # RVR 1800 authorized with use of FD or AP or HUD to DA.			 MALSR	MISSED APPROACH: Climb to 3000 direct OCTEC and hold.
	ATIS 119.75	GREAT LAKES APP CON ★ 118.65 226.4	LANSING TOWER 119.9 240.9	GND CON 121.9	CLNC DEL 123.675



ELEV 861	D	TDZE 852
3000	OCTEC	4 NM Holding Pattern
* LNAV only. * 1.3 NM to RWY28L		
GP 3.00° TCH 53		
1.3 3.4 NM 5.9 NM		
CATEGORY	A	B C D
LPV DA #	1052/24	200 (200-½)
LNAV/VNAV DA	1174/28	322 (400-¾)
LNAV MDA	1300/24 448 (500-½)	1300/45 448 (500-¾)
C CIRCLING	1380-1 519 (600-1)	1600-2 739 (800-2) 1760-3 899 (900-3)

EC-1, 03 DEC 2020 to 31 DEC 2020

EC-1, 03 DEC 2020 to 31 DEC 2020