

## ILS or LOC/DME RWY 1

LOC I-RFB <b>110.1</b>	APCH CRS <b>007°</b>	Rwy Idg <b>9000</b> THRE <b>579</b> Arpt Elev <b>580</b>	AL-276 [USAF]	SELFIDGE ANGB (KMTG)
<p>▼ * When ALS inop, increase RVR to 50, vis to 1 mile.          ** When ALS inop, increase CAT AB RVR to 55 and vis to 1 mile CAT CDE vis to 1 3/8 miles.</p>			<p>SALS</p> <p>A-2 </p>	<p>MISSED APPROACH: Climb to 4000 on MTC R-007 to CASCO and hold, continue climb-in-hold to 4000.</p>

ATIS 125.325 270.1	SELFRIDGE APP CON 119.6 318.2	SELFRIDGE TOWER ★ 120.15 (CTAF) 0 225.4	GND CON 128.3 275.8	CLNC DEL 128.3 275.8
-----------------------	----------------------------------	--	------------------------	-------------------------

\*\*\* Circling not authorized W of Rwy 1-19.

A1018

**CAUTION:** 5 NM Intermediate Segment Length. Recommend Early Configuration.

SELFRIDGE  
Chan 64 MTC 

LOCALIZER 110.1  
LBER ..

ASAKE  
MTC

Max holding  
alt 6000  
Min holding  
alt 4000

PONTIAC  
111.0 PSI

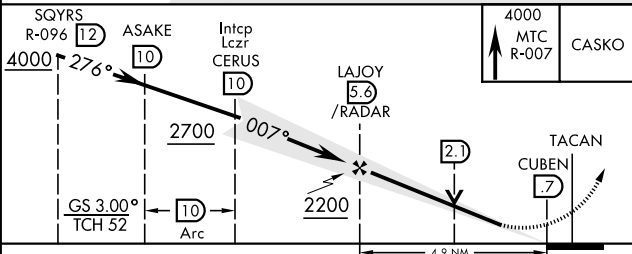
32

LAJOY  
MTC 5.6  
/RADAR

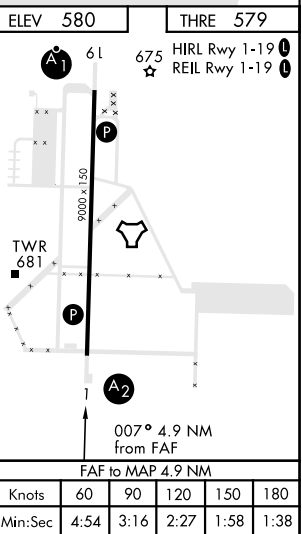
2700 Arc

MSA MIC 25 NM

EMERG SAFE ALT 100 NM 3100



4000 MTC R-007	CASKO
----------------------	-------



CATEGORY	A	B	C	D	E
S-ILS 01*	907/40		328	(400-¾)	
S-LOC 01**	1060/40	481 (500-¾)	1060/60	481 (500-1½)	
CIRCLING ***	1120-1	541 (600-1)	1120-1½ 541 (600-1½)	1140-2	561 (600-2)

MT. CLEMENS, MICHIGAN  
Amdt 3 23AUG12

42°36'N-82°50'W

SELFRIDGE ANGB (KMTC)

## ILS or LOC/DME RWY 1

EC-1, 03 DEC 2020 to 31 DEC 2020

EC-1, 03 DEC 2020 to 31 DEC 2020