
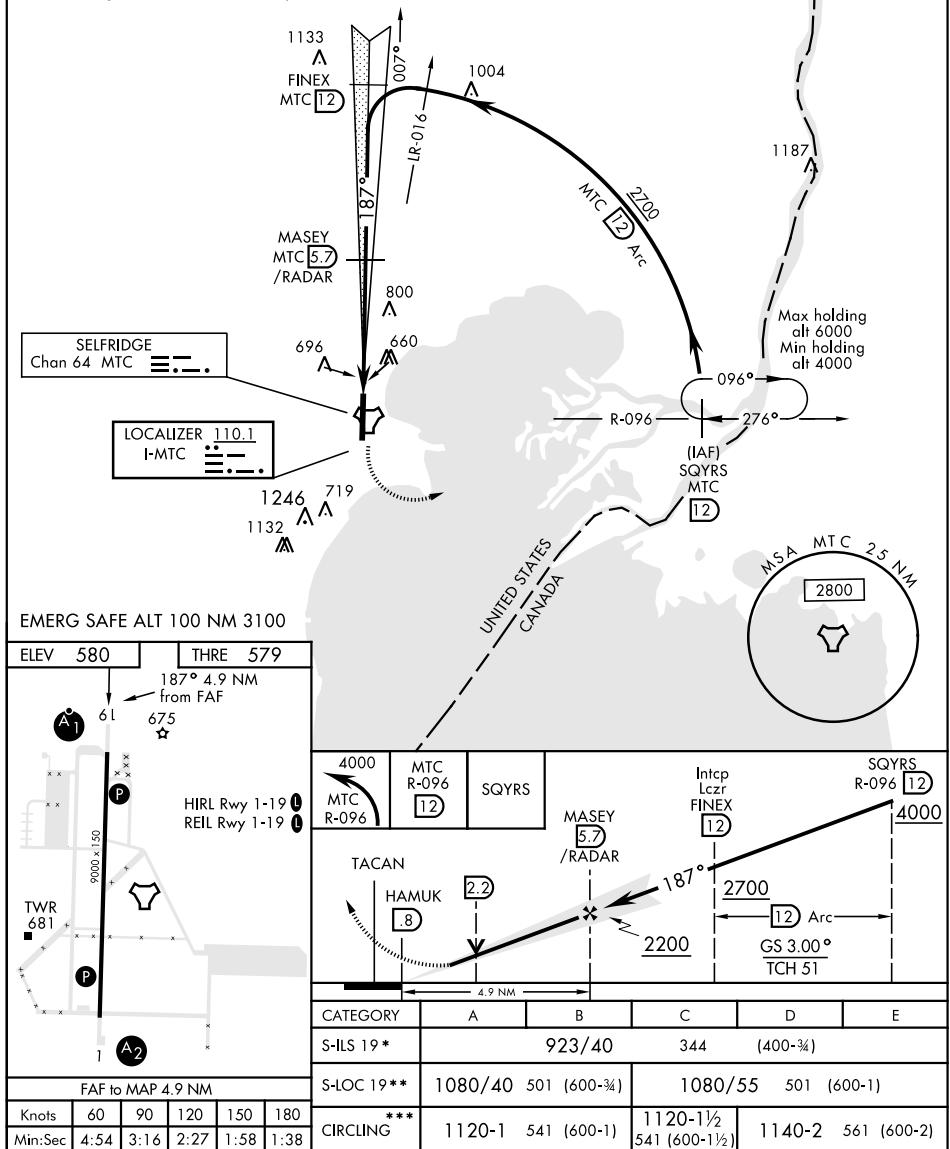


ILS or LOC/DME RWY 19

LOC I-MTC 110.1	APCH CRS 187°	Rwy Idg THRE Arpt Elev 9000 579 580	AL-276 [USAF]	SELFRIDGE ANGB (KMTCT)	
▼ * When ALS inop, increase RVR to 55, vis to 1 mile. ** When ALS inop, increase CAT AB RVR to 55, vis to 1 mile, CAT CDE vis to 1½ miles.			ALSF-1 	MISSED APPROACH: Climbing left turn to 4000, intercept MTC R-096 to SQYRS and hold, continue climb-in-hold to 4000.	
ATIS 125.325 270.1		SELFRIDGE APP CON 119.6 318.2	SELFRIDGE TOWER ★ 120.15(CTAF) 225.4	GND CON 128.3 275.8	CLNC DEL 128.3 275.8

*** Circling not authorized W of Rwy 1-19.



MT. CLEMENS, MICHIGAN

42°36'N-82°50'W

SELFRIDGE ANGB (KMTC)

Amdt 3 23AUG12

ILS or LOC/DME RWY 19