

(ZETTR3.ZETTR) 19339

ZETTR THREE DEPARTURE (RNAV)

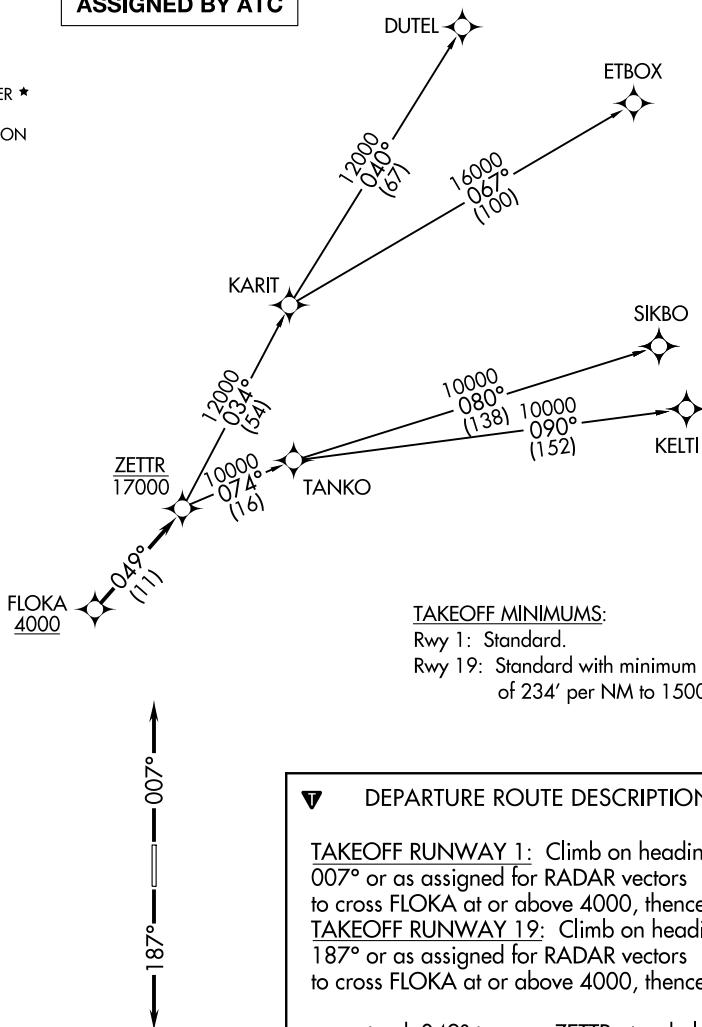
AL-276 (FAA)

SELFLEDGE ANGB (MTC)

MOUNT CLEMENS, MICHIGAN

ATIS
125.325 270.1
CLNC DEL
128.3 275.8
GND CON
128.3 275.8
SELFLEDGE TOWER ★
120.15 225.4
SELFLEDGE DEP CON
119.6 391.9

**TOP ALTITUDE:
ASSIGNED BY ATC**



TAKEOFF MINIMUMS:

Rwy 1: Standard.

Rwy 19: Standard with minimum climb
of 234' per NM to 1500.



DEPARTURE ROUTE DESCRIPTION

TAKEOFF RUNWAY 1: Climb on heading
007° or as assigned for RADAR vectors
to cross FLOKA at or above 4000, thence....

TAKEOFF RUNWAY 19: Climb on heading
187° or as assigned for RADAR vectors
to cross FLOKA at or above 4000, thence....

....on track 049° to cross ZETTR at or below
17000, then on (transition). Maintain
ATC assigned altitude, expect filed altitude
10 minutes after departure.

DUTEL TRANSITION (ZETTR3.DUTEL):

ETBOX TRANSITION (ZETTR3.ETBOX):

KELTI TRANSITION (ZETTR3.KELTI):

SIKBO TRANSITION (ZETTR3.SIKBO):

TANKO TRANSITION (ZETTR3.TANKO):

NOTE: RNAV 1.

NOTE: RADAR required.

NOTE: DME/DME/IRU or GPS required.

NOTE: Turbojet departures at/above 10000,
maintain 280K until advised by ATC.

NOTE: TANKO TRANSITION: For use by
CYYZ area arrivals only, or as
assigned by ATC.

NOTE: Chart not to scale.

ZETTR THREE DEPARTURE (RNAV)

(ZETTR3.ZETTR) 05DEC19

MOUNT CLEMENS, MICHIGAN

SELFLEDGE ANGB (MTC)

EC-1, 03 DEC 2020 to 31 DEC 2020