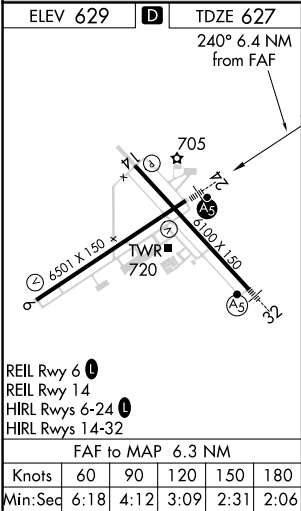
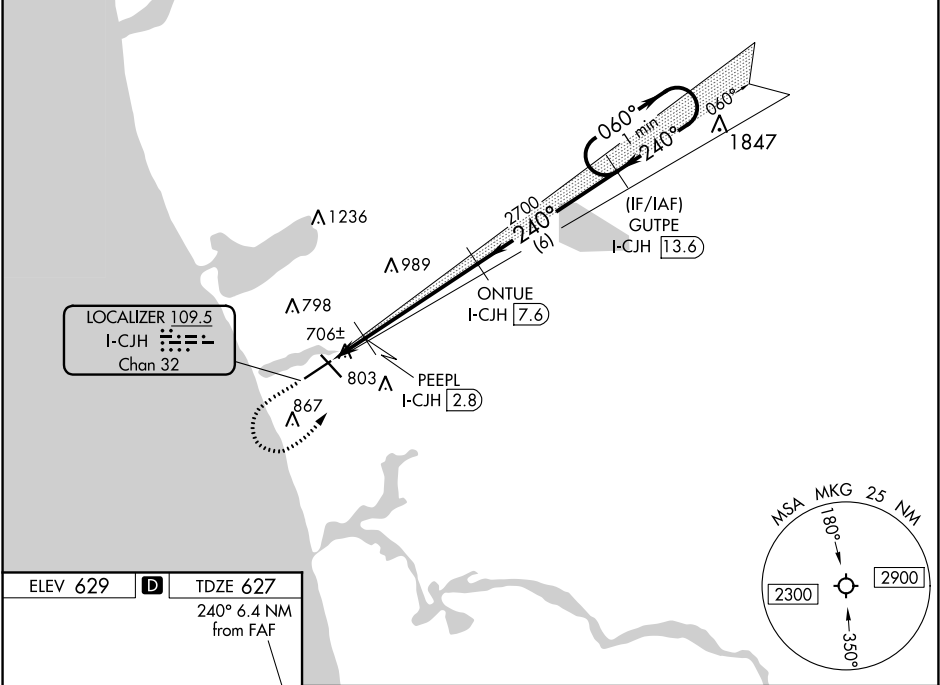


LOC/DME I-CJH 109.5 Chan 32	APP CRS 240°	Rwy Idg TDZE Apt Elev 6501 627 629
---	------------------------	--

ILS or LOC RWY 24
MUSKEGON COUNTY (MKG)

DME required. RADAR required. RNAV 1-GPS required.		MALSR 	MISSED APPROACH: Climb to 2500 then climbing left turn to 3000 direct GUTPE and hold.	
ATIS 124.3	GREAT LAKES APP CON ★ 119.8 290.35 (North) 133.825 290.35 (South)	MUSKEGON TOWER ★ 126.25 (CTAF) 343.725	GND CON 121.6	UNICOM 122.95

RADAR REQUIRED



ELEV 629 D TDZE 627 240° 6.4 NM from FAF		2500 3000 GUTPE *LOC only I-CJH [13.6]		One Minute Holding Pattern	
PEEPL I-CJH [2.8]		ONTUE I-CJH [7.6]		GUTPE I-CJH [13.6]	
I-CJH [1.3] *I-CJH [2.1]		2700 2700		060° → 3000 ← 240°	
*1160		GS 3.00° TCH 56			
CATEGORY		A	B	C	D
S-ILS 24			827-½	200 (200-½)	
S-LOC 24			960-½	333 (400-½)	
CIRCLING		1080-1 451 (500-1)	1180-1 551 (600-1)	1200-1½ 571 (600-1½)	1200-2 571 (600-2)