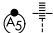
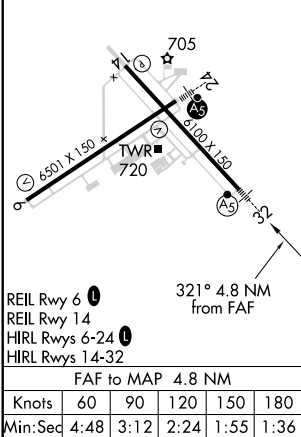
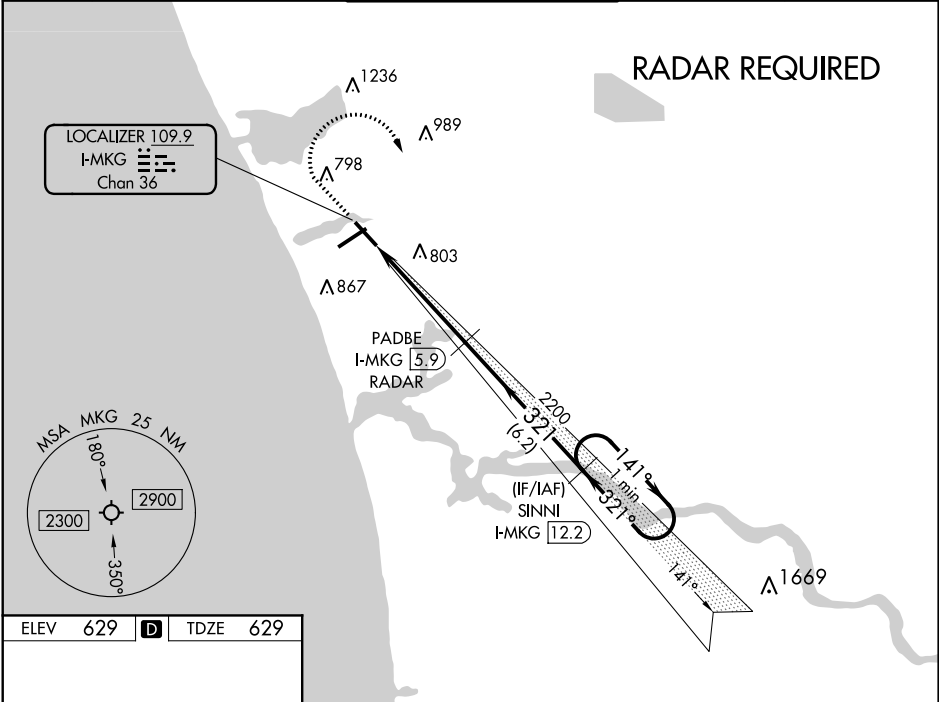


LOC/DME I-MKG 109.9 Chan 36	APP CRS 321°	Rwy Idg 6100 TDZE 629 Apt Elev 629
---	------------------------	---

ILS or LOC RWY 32
MUSKEGON COUNTY (MKG)

DME or RADAR required. RNAV 1-GPS required.	MALSR 	MISSED APPROACH: Climb to 2500 then climbing right turn to 3000 direct SINNI and hold.
For inop ALS, increase S-LOC Cat C/D visibility to 1 3/8 SM. ** RVR 1800 authorized with use of FD or AP or HUD to DA.		

ATIS 124.3	GREAT LAKES APP CON ★ 119.8 290.35 (North) 133.825 290.35 (South)	MUSKEGON TOWER ★ 126.25 (CTAF) 0 343.725	GND CON 121.6	UNICOM 122.95
----------------------	---	---	-------------------------	-------------------------



2500 ↑	3000 ↗	SINNI I-MKG 12.2	One Minute Holding Pattern	
*LOC only				
I-MKG 1.2	* I-MKG 2.5	PADBE I-MKG 5.9 RADAR	SINNI I-MKG 12.2	
CATEGORY	A	B	C	D
S-ILS 32 **	829/24 200 (200-½)			
S-LOC 32	1120/24 491 (500-½)		1120/50 491 (500-1)	
CIRCLING	1120-1 491 (500-1)	1180-1 551 (600-1)	1200-1½ 571 (600-1½)	1200-2 571 (600-2)