

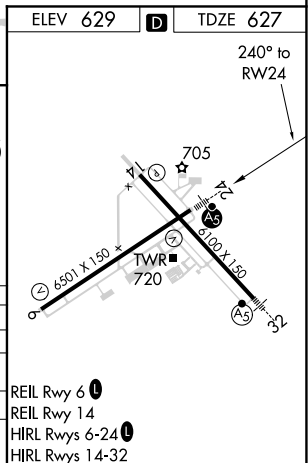
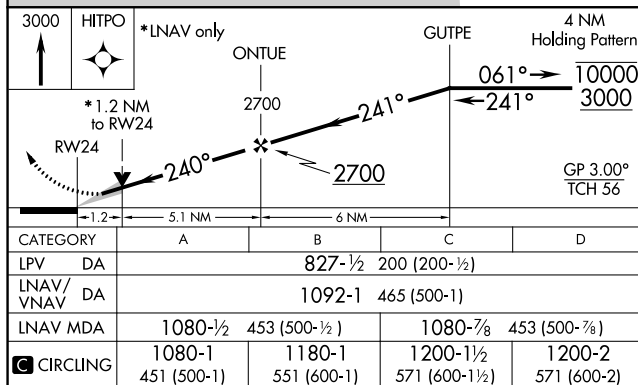
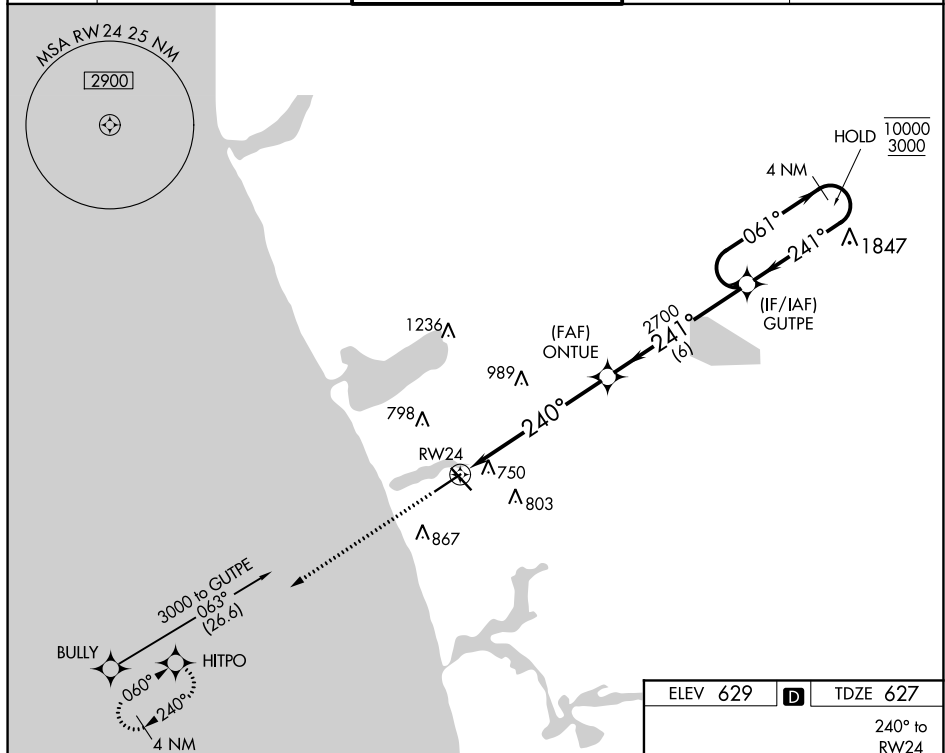
RNAV (GPS) RWY 24
MUSKEGON COUNTY (MKG)

T For uncompensated Baro-VNAV systems, LNAV/VNAV NA below -18°C or above 54°C. For inop ALS, increase LPV visibility all Cats to ¾ SM, LNAV/VNAV visibility all Cats to 1¾ SM, LNAV Cats A/B to 1 SM and LNAV Cats C/D to 1¾ SM.



MISSED APPROACH:
Climb to 3000 direct
HITPO and hold.

| | | | | |
|----------------------|--|--|-------------------------|-------------------------|
| ATIS 124.3 | GREAT LAKES APP CON★ 119.8 290.35 (North) 133.825 290.35 (South) | MUSKEGON TOWER★ 126.25 (CTAF) 0 343.725 | GND CON 121.6 | UNICOM 122.95 |
|----------------------|--|--|-------------------------|-------------------------|



EC-1, 03 DEC 2020 to 31 DEC 2020