

19115

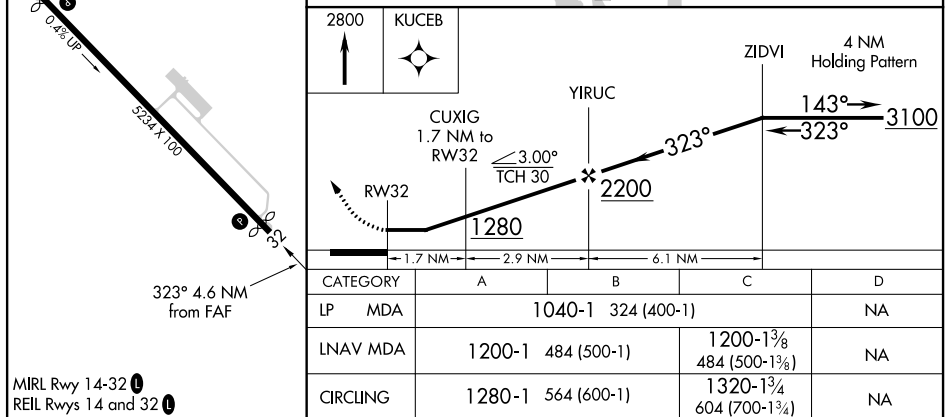
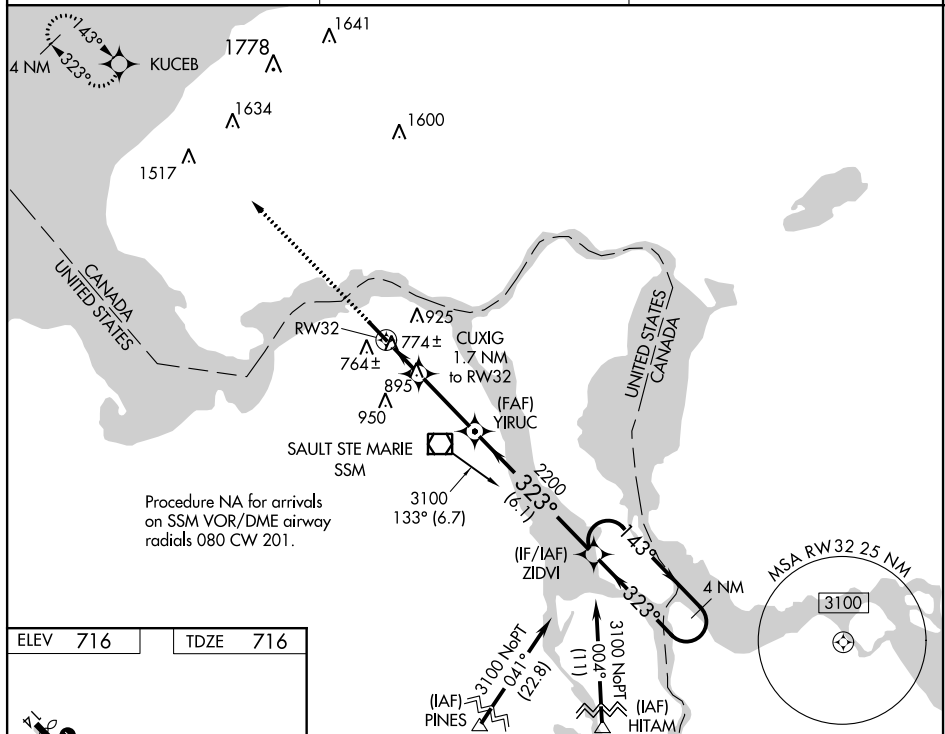
# RNAV (GPS) RWY 32

## SAULT STE MARIE MUNI/SANDERSON FIELD (ANJ)

**T** Rwy 32 helicopter visibility reduction below  $\frac{3}{4}$  SM NA. When local altimeter setting  
**A** not received, use Chippewa County Intl altimeter setting and increase all MDA 60 feet,  
and increase LP Cat C visibility  $\frac{1}{8}$  mile and LNAV Cat C visibility  $\frac{1}{4}$  mile.

MISSED APPROACH: Climb to 2800 direct KUCEB and hold.

ASOS <b>118.375</b>	TORONTO CENTER <b>132.65 344.5</b>	UNICOM <b>122.7 (CTAF) 0</b>
------------------------	---------------------------------------	---------------------------------



SAULT STE MARIE MUNI/SANDERSON FIELD (ANJ)  
46°29'N-84°22'W **RNAV (GPS) RWY 32**