

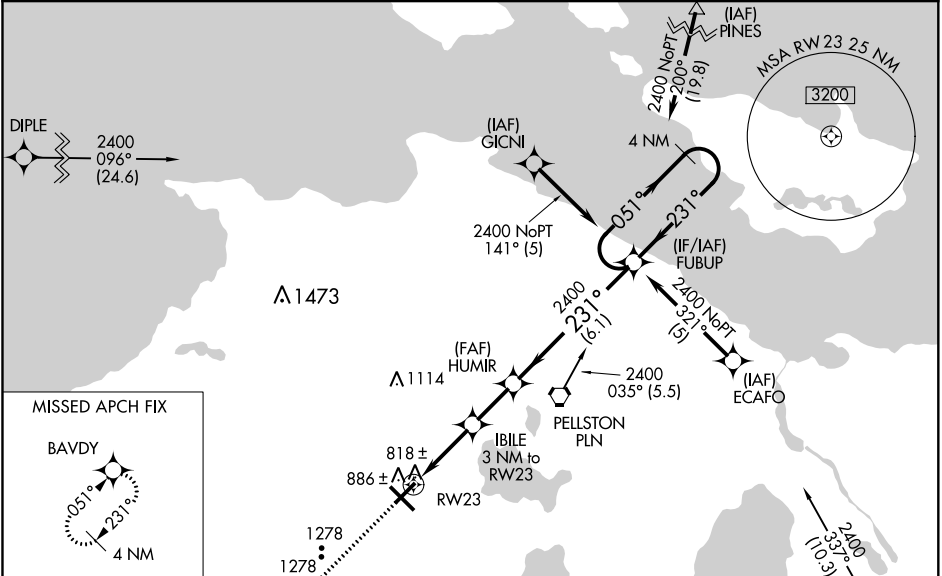
WAAS CH 81915 W23A	APP CRS 231°	Rwy Idg TDZE 721 Apt Elev 721
--	------------------------	---

RNAV (GPS) RWY 23
PELLSTON RGNL AIRPORT OF EMMET COUNTY (PLN)

Baro-VNAV NA when using Harbor Springs altimeter setting. For uncompensated Baro-VNAV systems, LNAV/VNAV NA below -16°C (4°F) or above 47°C (116°F). DME/ DME RNP-0.3 NA. Rwy 23 helicopter visibility reduction below ¾ SM NA. When local altimeter setting not received, use Harbor Springs altimeter setting and increase LPV DA to 1085, LNAV/VNAV DA to 1137 and all visibilities ¼ mile, and all MDA 40 feet; increase Circling Cat C visibility ¼ mile. Circling Rwy 5 NA at night.

MISSED APPROACH:
Climb to 3000 direct
BAVDY and hold.

ASOS 119.025	MINNEAPOLIS CENTER 134.6 354.05	UNICOM 123.0 (CTAF) 0
------------------------	---	---------------------------------



ELEV 721 **D** TDZE 721

231° to RW23

5401 X 150

6513 X 150

766

5

3

HIRL Rwy 14-32 **0**

MIRL Rwy 5-23 **0**

REIL Rwy 5, 14, and 23 **0**

3000	BAVDY	HUMIR	FUBUP	4 NM Holding Pattern
*LNAV only.	IBILE 3 NM to RW23	231°	051°	2400
RW23	*1720	2400	GP 3.00° TCH 45	
3 NM	2.1 NM	6.1 NM		
CATEGORY	A	B	C	D
LPV DA		1057-1¼	336 (400-1¼)	
LNAV/VNAV DA		1109-1¼	338 (400-1¼)	
LNAV MDA	1240-1	519 (600-1)	1240-1½	1240-1¾
			519 (600-1½)	519 (600-1¾)
CIRCLING	1260-1	1300-1	1300-1½	1420-2¼
	539 (600-1)	579 (600-1)	579 (600-1½)	699 (700-2¼)