

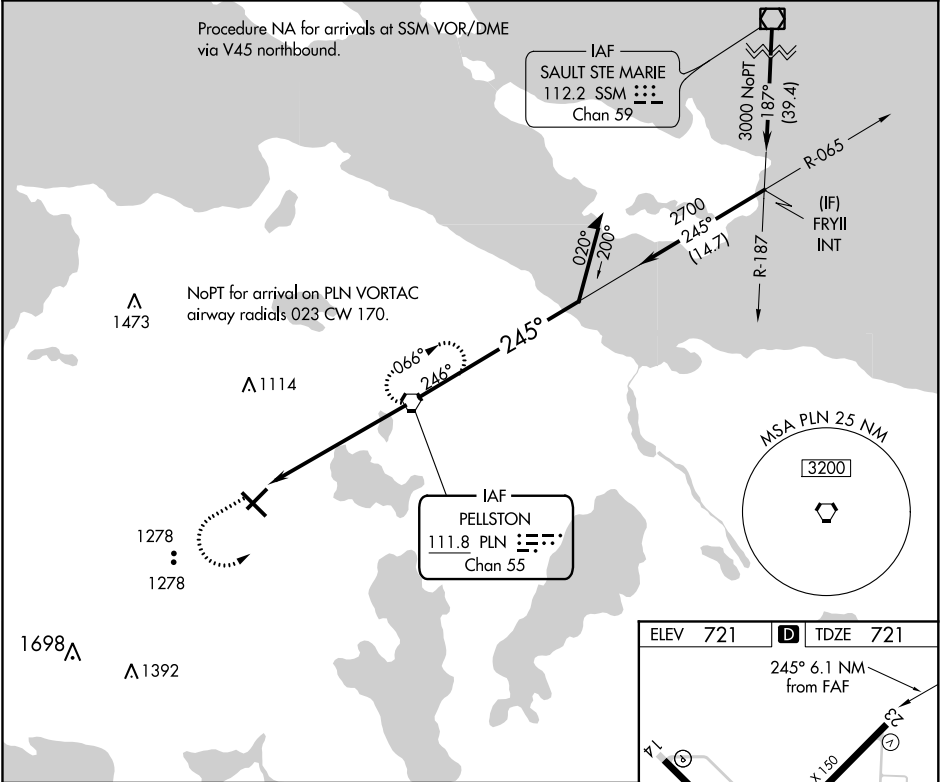
VORTAC PLN	APP CRS	Rwy Idg	5395
111.8	245°	TDZE	721
Chan 55		Apt Elev	721

VOR RWY 23

PELLSTON RGNL AIRPORT OF EMMET COUNTY (PLN)

<p>▼ ▲ ❄ -33°C</p>	<p>When local altimeter setting not received, use Harbor Springs altimeter setting and increase all MDA 40 feet. Increase all Cat C and S-23 Cat D visibility ¼ mile. Rwy 23 helicopter visibility reduction below 1 SM NA. Straight-in Rwy 23 NA at night, Circling Rwy 5, 23 NA at night.</p>	<p>MISSED APPROACH: Climb to 2000 then climbing left turn to 2800 direct PLN VORTAC and hold.</p>
----------------------------	---	---

ASOS 119.025	MINNEAPOLIS CENTER 134.6 354.05	UNICOM 123.0 (CTAF) 0
-----------------	------------------------------------	--------------------------



2000	2800	PLN		
↑	↖	⬡		
<div><div>PLN VORTAC</div><div>Remain within 10 NM</div><div>065°</div><div>2700</div><div>245°</div><div>2700</div><div>2.99°</div><div>TCH 45</div><div>6.1 NM</div></div>				
CATEGORY	A	B	C	D
S-23	1300-1	579 (600-1)	1300-1½ 579 (600-1½)	1300-1¾ 579 (600-1¾)
CIRCLING	1300-1	579 (600-1)	1300-1½ 579 (600-1½)	1420-2¼ 699 (700-2¼)

ELEV	721	<b>D</b>	TDZE	721	
HIRL Rwy 14-32 <b>L</b>					
MIRL Rwy 5-23 <b>L</b>					
REIL Rws 5, 14, and 23 <b>L</b>					
FAF to MAP 6.1 NM					
Knots	60	90	120	150	180
Min:Sec	6:06	4:04	3:03	2:26	2:02