

LOC I-MBS 108.7	APP CRS 053°	Rwy Idg 8002
		TDZE 666
		Apt Elev 668

ILS or LOC RWY 5
MBS INTL (MBS)

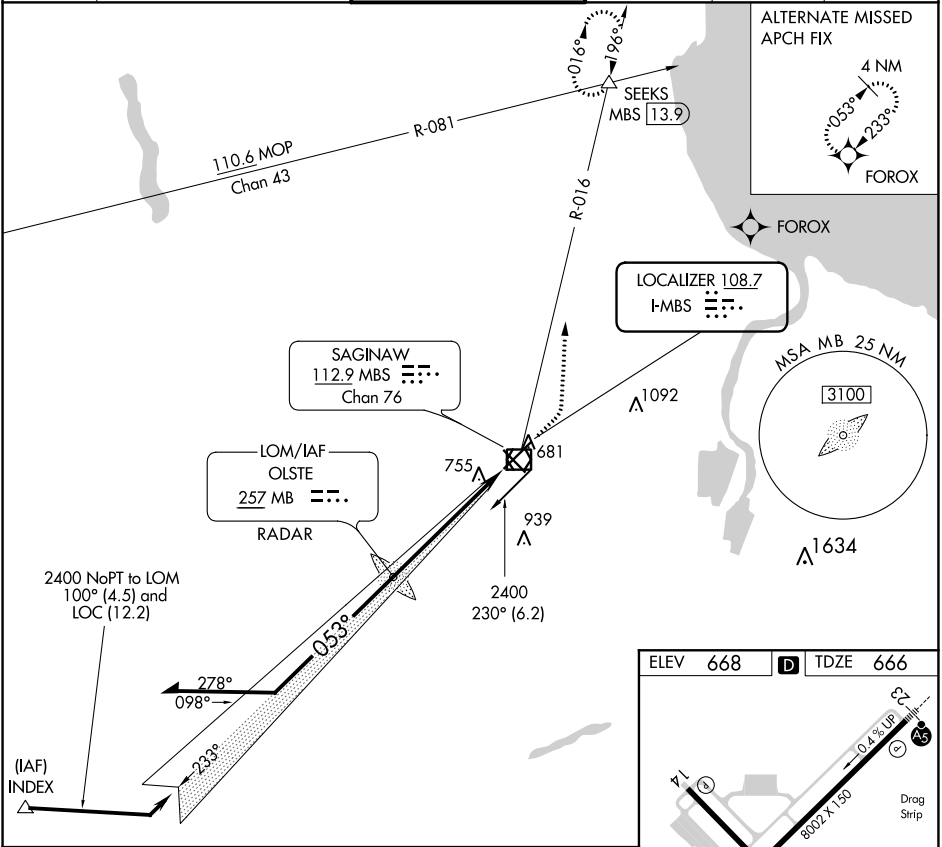
V
A

**RVR 1800 authorized with the use of FD or AP or HUD to DA.

MALSR

MISSED APPROACH: Climb to 1100 then climbing left turn to 2400 on heading 010° and MBS VOR/DME R-016 to SEEKS INT/MBS 13.9 DME and hold.

ATIS 125.925	GREAT LAKES APP CON ★ 126.45 235.625	SAGINAW TOWER ★ 120.1 (CTAF) 257.7	GND CON 121.7	CLNC DEL 121.85	UNICOM 122.95
------------------------	--	--	-------------------------	---------------------------	-------------------------



Remain within 10 NM				
OLSTE LOM RADAR				
2400 053° 233° 2378 2400 5.8 NM				
GS 2.75° TCH 55				
CATEGORY	A	B	C	D
S-ILS 5 **	866/24 200 (200-½)			
S-LOC 5	1100/24	434 (500-½)	1100/40	434 (500-¾)
CIRCLING	1100-1 432 (500-1)	1120-1 452 (500-1)	1240-1½ 572 (600-1½)	1240-2 572 (600-2)

ELEV 668 D TDZE 666

REIL Rwy 14 and 32
HIRL Rwy 5-23 and 14-32

FAF to MAP 5.8 NM

Knots	60	90	120	150	180
Min:Sec	5:48	3:52	2:54	2:19	1:56

EC-1, 03 DEC 2020 to 31 DEC 2020

EC-1, 03 DEC 2020 to 31 DEC 2020