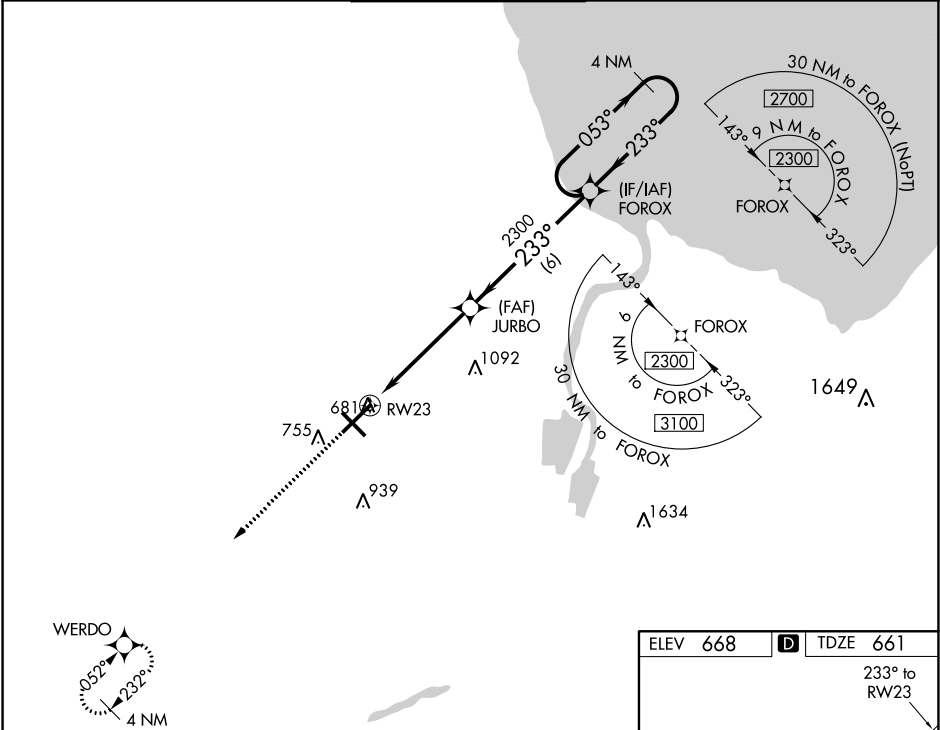


WAAS CH <b>49010</b> <b>W23A</b>	APP CRS <b>233°</b>	Rwy Idg TDZE <b>661</b> Apt Elev <b>668</b>	<b>8002</b>
--	------------------------	---	-------------

RNAV (GPS) RWY 23

MBS INTL (MBS)

<div>T</div>	<div>For uncompensated Baro-VNAV systems, LNAV/VNAV NA below -18°C (0°F) or above 54°C (130°F). DME/DME RNP-0.3 NA. For inoperative ALS, increase LNAV/VNAV all Cats visibility to RVR 4500. # RVR 1800 authorized with use of FD or AP or HUD to DA.</div>			<div>MALSR</div> <div><div><div></div></div><div><div></div></div></div>	<div>MISSED APPROACH: Climb to 2300 direct WERDO and hold.</div>	
<div>ATIS</div> <div>125.925</div>	<div>GREAT LAKES APP CON ★</div> <div>126.45 235.625</div>		<div>SAGINAW TOWER ★</div> <div>120.1 (CTAF) 0 257.7</div>	<div>GND CON</div> <div>121.7</div>	<div>CLNC DEL</div> <div>121.85</div>	<div>UNICOM</div> <div>122.95</div>



<div>2300</div> <div>WERDO</div>		<div>JURBO</div> <div>2300</div>		<div>FOROX</div> <div>4 NM Holding Pattern</div>	
* LNAV only		* 1.1 NM to RW23		233° 053° 2300	
RW23		2300		GP 3.00° TCH 54	
1.1		3.9 NM		6 NM	
CATEGORY	A	B	C	D	
LPV DA #		861/24	200 (200-½)		
LNAV/VNAV DA		940/24	279 (300-½)		
LNAV MDA	1060/24	399 (400-½)	1060/35	399 (400-¾)	
CIRCLING	1080-1 412 (500-1)	1120-1 452 (500-1)	1240-1½ 572 (600-1½)	1240-2 572 (600-2)	

