

LOC I-AZO 110.9	APP CRS 354°	Rwy Idg TDZE Apt Elev	6502 868 874
---------------------------	------------------------	-----------------------------	---

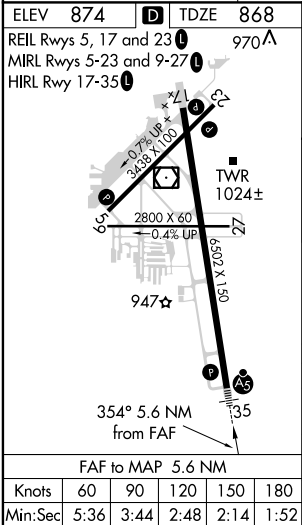
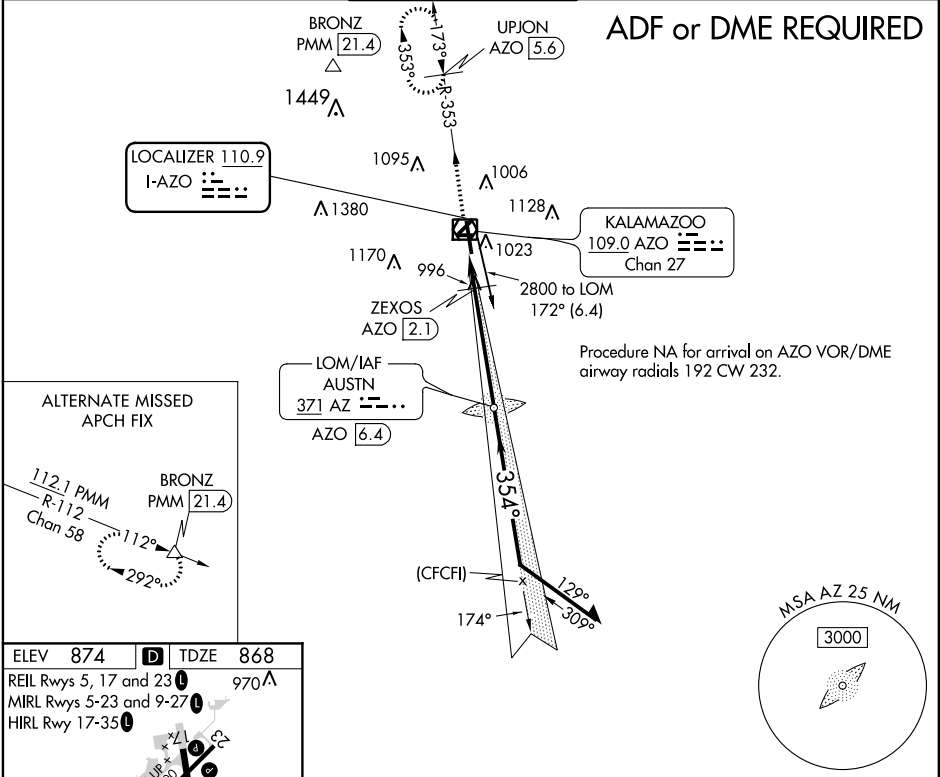
ILS or LOC RWY 35

KALAMAZOO/BATTLE CREEK INTL (AZO)

Night landing: Rwy 5, 9, 23, 27 NA. DME required. For inop MALSR, increase S-LOC 35 Cats C and D visibility to 1½ mile.
** RVR 1800 authorized with use of FD or AP or HUD to DA.

MISSED APPROACH: Climb to 2600 on AZO VOR/DME R-353 to UPJON/AZO VOR/DME 5.6 DME and hold.

ATIS 127.25	GREAT LAKES APP CON ★ 121.2 239.25	KALAMAZOO TOWER ★ 118.3 (CTAF) 0 257.875	GND CON 121.9	CLNC DEL 121.75	UNICOM 122.95
-----------------------	--	--	-------------------------	---------------------------	-------------------------



2600	AZO R-353	UPJON AZO 5.6	AUSTN LOM AZO 6.4	Remain within 10 NM
* LOC only	ZEXOS AZO 2.1	2728	174°	354° 2800
	1340*	2800		GS 3.00° TCH 53
	1.3 NM	4.3 NM		
CATEGORY	A	B	C	D
S-ILS 35	** 1068/24 200 (200-½)			
S-LOC 35	1260/24	392 (400-½)	1260/35	392 (400-¾)
CIRCLING	1380-1	506 (600-1)	1480-1¾ 606 (700-1¾)	1480-2 606 (700-2)

EC-1, 03 DEC 2020 to 31 DEC 2020

EC-1, 03 DEC 2020 to 31 DEC 2020