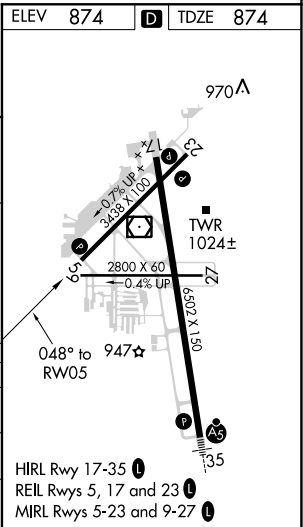
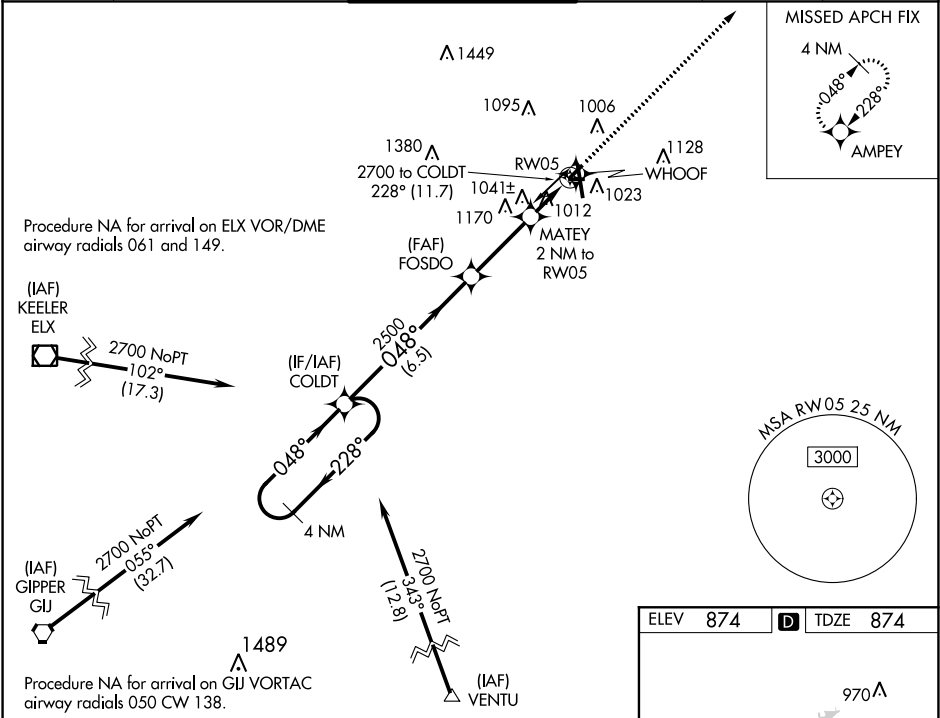


WAAS CH <b>56321</b> <b>W05A</b>	APP CRS <b>048°</b>	Rwy Idg TDZE Apt Elev	<b>3439</b> <b>874</b> <b>874</b>
--	------------------------	-----------------------------	---

**RNAV (GPS) RWY 5**  
KALAMAZOO/BATTLE CREEK INTL (AZO)

RNP APCH.		MISSED APPROACH: Climb to 3000 direct AMPEY and hold.
<div>▼ ASR</div>	Circling Rwy 5, 9, 17, 23, 27 NA at night. Straight-in Rwy 5 NA at night. Rwy 5 helicopter visibility below 1 SM NA.	

ATIS <b>127.25</b>	GREAT LAKES APP CON ★ <b>121.2 239.25</b>	KALAMAZOO TOWER ★ <b>118.3 (CTAF) 0 257.875</b>	GND CON <b>121.9</b>	CLNC DEL <b>121.75</b>	UNICOM <b>122.95</b>
-----------------------	--	--	-------------------------	---------------------------	-------------------------



4 NM Holding Pattern		COLDT	3000	AMPEY
2700		228°	048°	048°
2500		3.00°	TCH 28	RW05
1520		6.5 NM	3 NM	2 NM
CATEGORY	A	B	C	D
LP MDA	1280-1	406 (500-1)	1280-1 1/8 406 (500-1 1/8)	NA
LNAV MDA	1300-1	426 (500-1)	1300-1 1/4 426 (500-1 1/4)	NA
CIRCLING	1380-1	506 (600-1)	1480-1 3/4 606 (700-1 3/4)	NA

EC-1, 03 DEC 2020 to 31 DEC 2020

EC-1, 03 DEC 2020 to 31 DEC 2020