

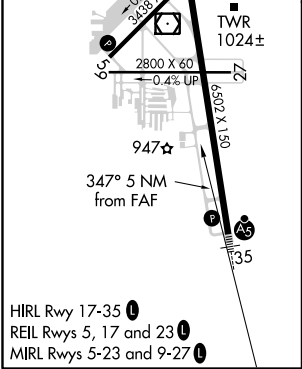
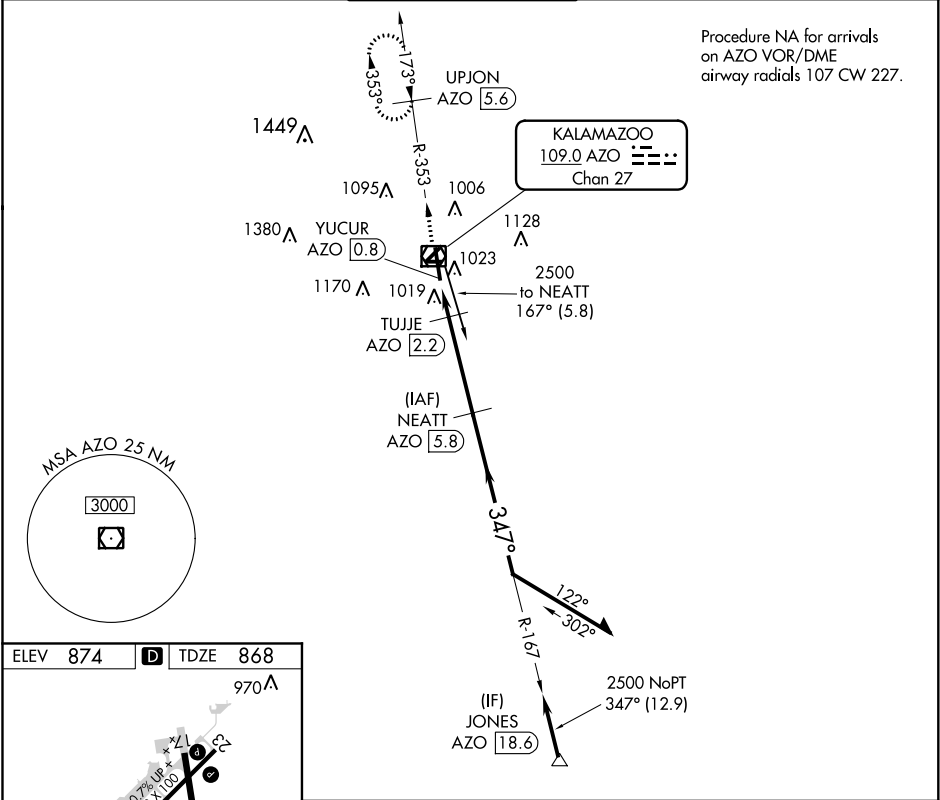
VOR/DME	AZO	APP CRS	Rwy Idg	6502
109.0		347°	TDZE	868
Chan 27			Apt Elev	874

VOR RWY 35

KALAMAZOO/BATTLE CREEK INTL (AZO)

ASR	Circling to Rwy 5, 9, 23, 27 NA at night. DME required. For inoperative MALSR, increase S-35 Cat C and D visibility to RVR 6000.	MALSR	MISSED APPROACH: Climb to 2600 on AZO VOR/DME R-353 to UPJON/AZO 5.6 DME and hold.
-----	--	-------	--

ATIS	GREAT LAKES APP CON *	KALAMAZOO TOWER *	GND CON	CLNC DEL	UNICOM
127.25	121.2 239.25	118.3 (CTAF) 257.875	121.9	121.75	122.95



2600	AZO R-353	UPJON INT	NEATT AZO [5.8]	167°	2500	347°	2500	Remain within 10 NM
			TUJJE AZO [2.2]					
			YUCUR AZO [0.8]	3.00°	TCH 53			
				1.4	3.6 NM			
CATEGORY	A	B	C	D				
S-35	1280/24	412 (500-½)	1280/40	412 (500-¾)				
CIRCLING	1380-1	506 (600-1)	1480-1¾ 606 (700-1¾)	1480-2 606 (700-2)				

EC-1, 03 DEC 2020 to 31 DEC 2020

EC-1, 03 DEC 2020 to 31 DEC 2020