

## HI-ILS or LOC RWY 1

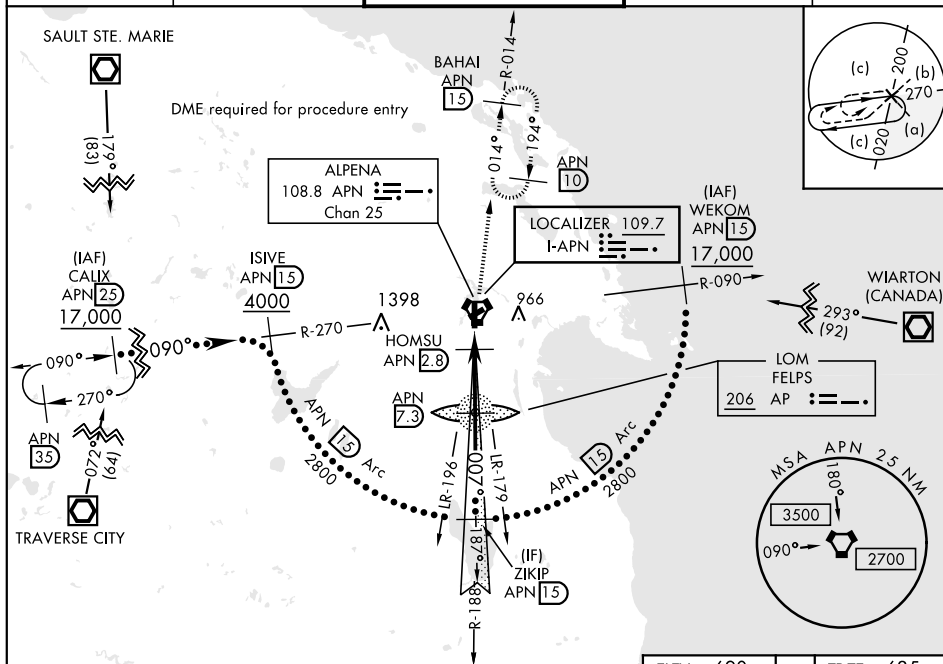
LOC I-APN <b>109.7</b>	APCH CRS <b>007°</b>	Rwy Idg TDZE Arpt Elev <b>9001</b> <b>685</b> <b>690</b>
---------------------------	-------------------------	---

JAL-718 [USAF]

ALPENA COUNTY RGNL (KAPN)

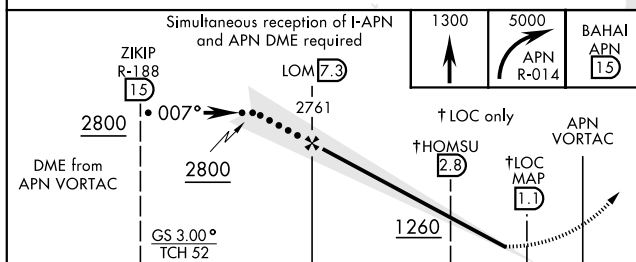
<p><b>▼</b></p> <p>* When ALS inop, increase vis to ¾ mile. ** When ALS inop, increase vis to 1½ miles.</p>	<p>MALSR</p> 	<p>MISSED APPROACH: Climb to 1300, then climbing right turn to 5000 on APN VORTAC R-014 to BAHAI/15 DME and hold. Continue climb-in-hold to 5000.</p>
---	--	---

ASOS <b>120.675</b>	ALPENA APP CON <b>128.425 379.3</b>	ALPENA TOWER ★ <b>121.35 (CTAF) 0 318.1</b>	GND CON <b>121.9 275.8</b>	UNICOM <b>122.95</b>
------------------------	--	--	-------------------------------	-------------------------

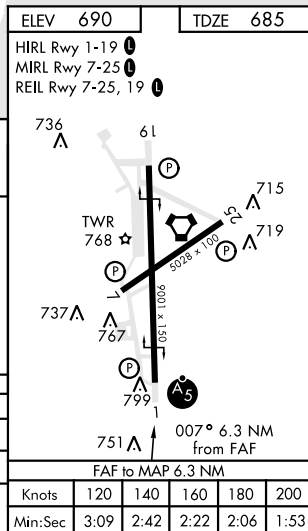


## DME REQUIRED

EMERG SAFE ALT 100 NM 4000



CATEGORY	C	D	E
S-ILS 1 *	885-½	200 (200-½)	
S-LOC 1 **	1140-7/8	455 (500-7/8)	
CIRCLING	1220-1½ 530 (600-1½)	1280-2 590 (600-2)	1320-2¼ 630 (700-2¼)



## HI-ILS or LOC RWY 1