

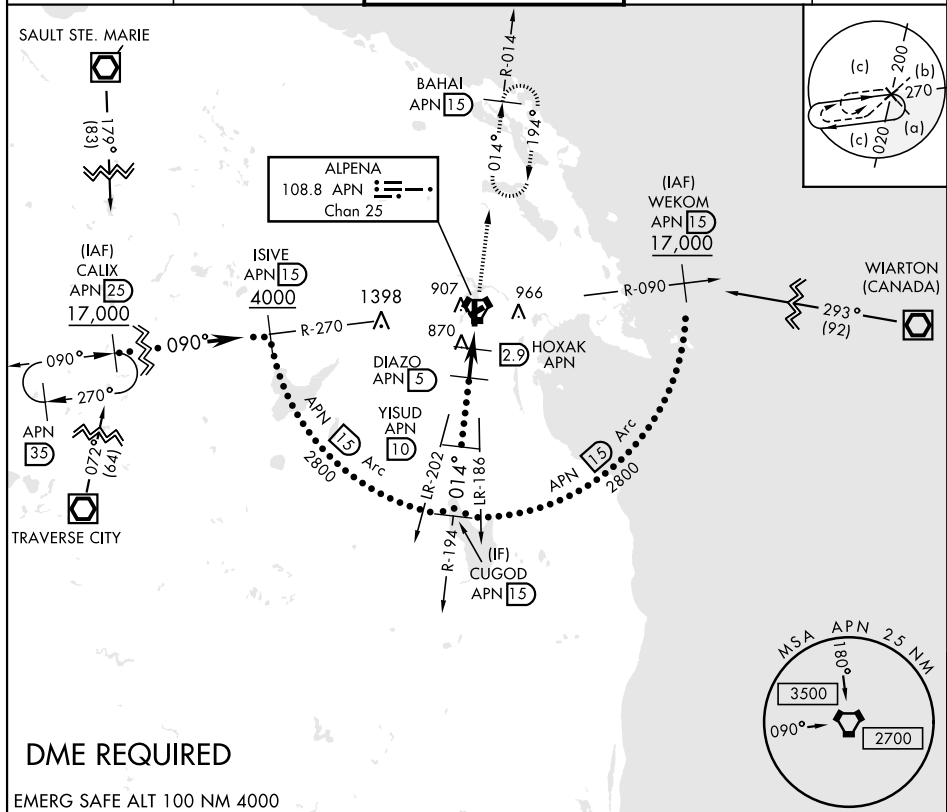


ALPENA, MICHIGAN

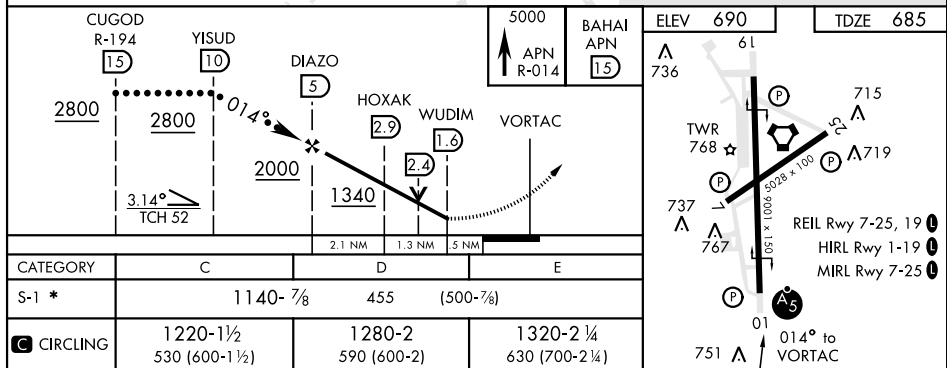
HI-VOR or TACAN RWY 1

VORTAC APN <b>108.8</b> Chan <b>25</b>	APCH CRS <b>014°</b>	Rwy Idg <b>9001</b> TDZE <b>685</b> Arpt Elev <b>690</b>	JAL-718 [USAF]	ALPENA COUNTY RGNL (KAPN)
 * When ALS inop, increase vis to 1 1/2.		<b>MALSR</b> 	MISSED APPROACH: Climb to 5000 on APN R-014 to BAHAI 15 DME and hold, continue climb in hold to 5000.	

ASOS 120.675	ALPENA APP CON 128.425 379.3	ALPENA TOWER ★ 121.35 (CTAF) 0 318.1	GND CON 121.9 275.8	UNICOM 122.95
-----------------	---------------------------------	---	------------------------	------------------



EMERG SAFE ALT 100 NM 4000



ALPENA, MICHIGAN

45° 05' N-83° 34' W

ALPENA COUNTY RGNL (KAPN)

Amdt 1C 13AUG20

HI-VOR or TACAN RWY 1