
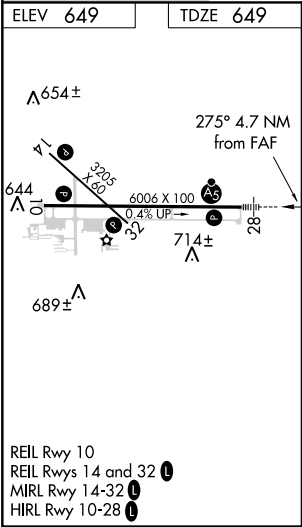
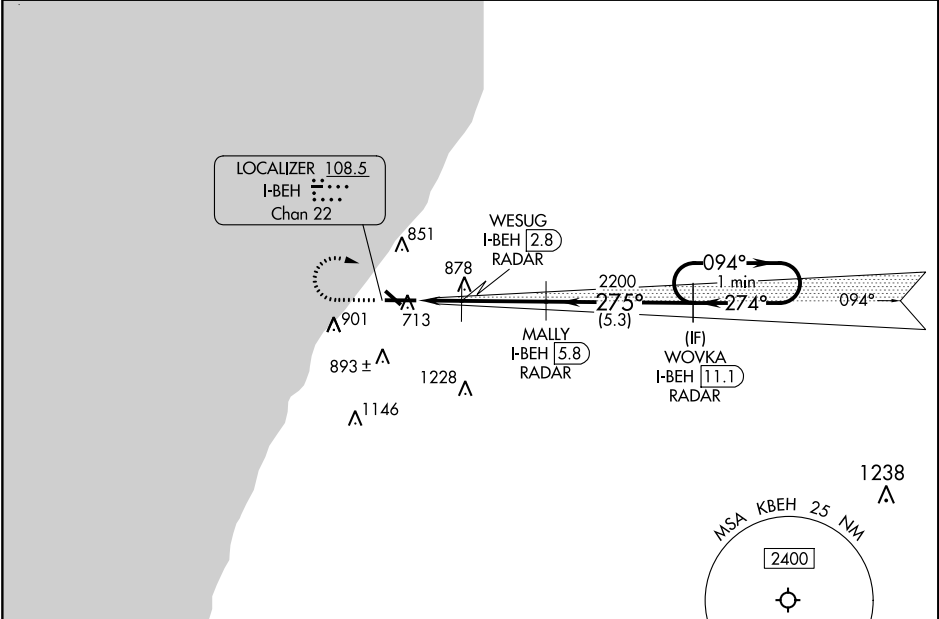


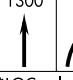
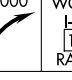

LOC I-BEH <b>108.5</b> Chan <b>22</b>	APP CRS <b>274°</b>	Rwy Idg TDZE Apt Elev	<b>6006</b> <b>649</b> <b>649</b>
---	------------------------	-----------------------------	---

ILS or LOC RWY 28  
SOUTHWEST MICHIGAN RGNL (BEH)

RNAV 1-GPS required.		<div>MALSR</div> <div></div>	MISSED APPROACH: Climb to 1300 then climbing right turn to 3000 direct WOVKA and hold.
DME Required for LOC only.			
<div><div><div><div><div></div><div></div></div><div><div></div><div></div></div></div><div><div></div><div></div></div></div><div><div></div><div></div></div></div> <div>NA</div>	<div>Circling Rwy 14 and 32 NA at night.</div> <div>For inop ALS, increase S-LOC 28 Cat C/D visibility to 1½ SM.</div>		

ASOS <b>121.55</b>	SOUTH BEND APP CON * <b>118.55 257.8</b>	SOUTH BEND CLNC DEL <b>119.7</b>	UNICOM <b>123.0 (CTAF) 0</b>
-----------------------	---	-------------------------------------	---------------------------------



ELEV 649		TDZE 649	
*LOC only.		One Minute Holding Pattern	
			
*LOC only.		GS 3.00° TCH 45	
CATEGORY		A	
S-ILS 28		849-½ 200 (200-½)	
S-LOC 28		1060-½ 411 (500-½) 1060-¾ 411 (500-¾)	
 CIRCLING		1140-1 491 (500-1) 1160-1 511 (600-1) 1300-1¾ 651 (700-1¾) 1340-2 691 (700-2)	

EC-1, 03 DEC 2020 to 31 DEC 2020

EC-1, 03 DEC 2020 to 31 DEC 2020