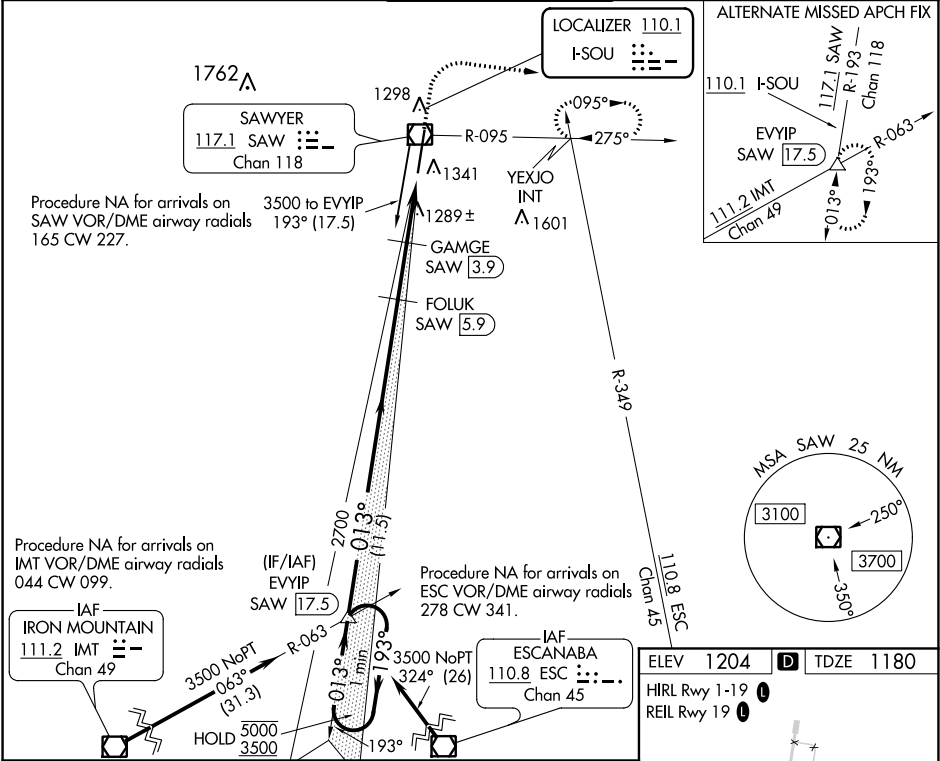


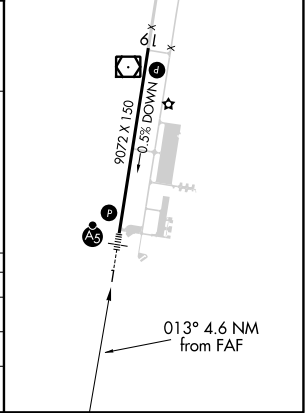
LOC I-SOU 110.1	APP CRS 013°	Rwy Idg 9072
		TDZE 1180
		Apt Elev 1204

ILS or LOC RWY 1
SAWYER INTL (SAW)

DME required for LOC only.		MALSR	MISSED APPROACH: Climb to 1700 then climbing right turn to 3000 on heading 101° and on SAW VOR/DME R-095 to YEXJO INT and hold.	
Autopilot coupled approach NA below 1360 MSL.		AS		
AWOS-3 118.375	MINNEAPOLIS CENTER 119.1 290.2	SAWYER TOWER ★ 119.975 (CTAF)	GND CON 121.65	UNICOM 122.7



One Minute Holding Pattern		EVYIP INT SAW [17.5]	FOLUK SAW [5.9]	1700 ↑	3000 hdg 101°	SAW R-095	YEXJO INT
5000 ← 193° 3500 ← 013°		013°	2700	* LOC only.			
GS 3.00° TCH 50		2700	GAMGE SAW [3.9]	*SAW [2.3]			
		11.5 NM	2 NM	1.6 NM	1 NM		
CATEGORY	A	B	C	D			
S-ILS 1	1380-½		200 (200-½)				
S-LOC 1	1580-½ 400 (400-½)		1580-⅝ 400 (400-⅝)				
CIRCLING	1680-1 476 (500-1)		1820-1¾ 616 (700-1¾)		1820-2 616 (700-2)		



EC-1, 03 DEC 2020 to 31 DEC 2020

EC-1, 03 DEC 2020 to 31 DEC 2020