


WAAS CH 69215 W16A	APP CRS 157°	Rwy Idg TDZE Apt Elev	7203 799 799
--	------------------------	-----------------------------	---

RNAV (GPS) RWY 16

CHIPPEWA COUNTY INTL (CIU)

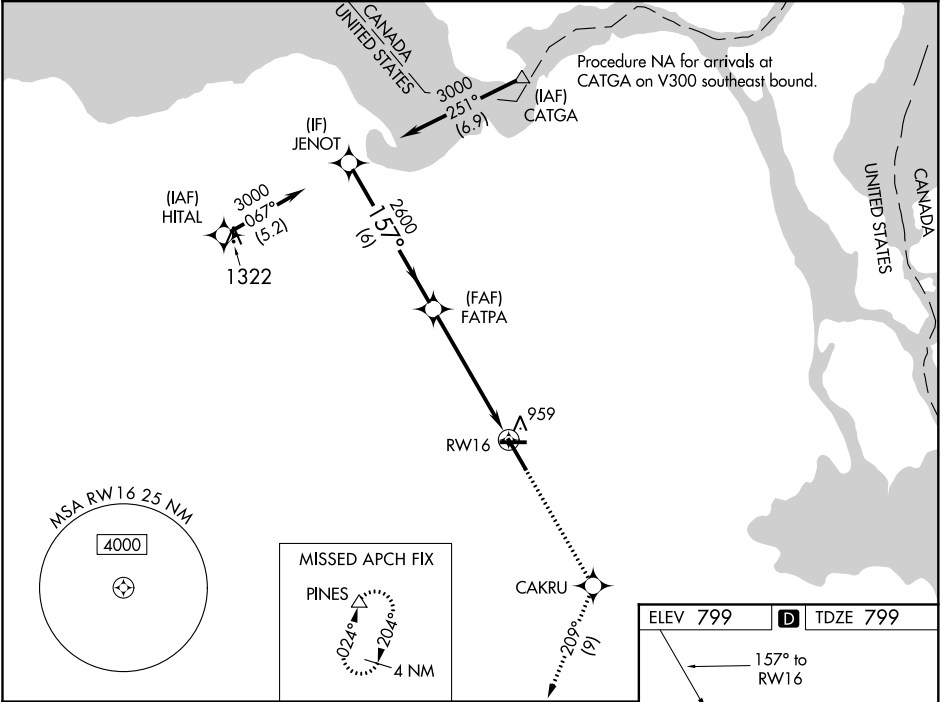
RNP APCH.

For uncompensated Baro-VNAV systems, LNAV/VNAV NA below -16°C or above 54°C.
For inop ALS, increase LPV all Cats, LNAV/VNAV all Cats and LNAV Cats A/B/C ½ SM;
increase LNAV Cat D ¼ SM.

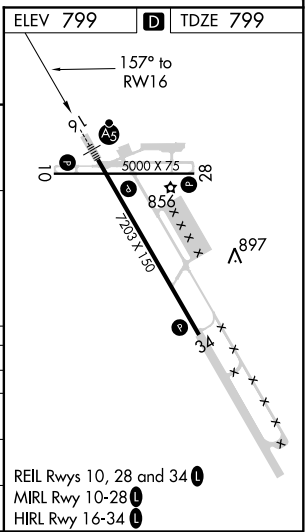
MALSR


MISSED APPROACH:
Climb to 3000 direct
CAKRU and on track
209° to PINES and
hold.

AWOS-3PT 127.575	TORONTO CENTER 132.65 344.5	UNICOM 123.0 (CTAF) 0
----------------------------	---------------------------------------	---------------------------------



JENOT		FATPA		3000	CAKRU	tr 209°	PINES
3000		2600		*1.1 NM to RW16			
GP 3.00° TCH 58		6 NM		4.3 NM		1.1	
CATEGORY	A	B	C	D			
LPV DA	1068-½		269 (300-½)				
LNAV/VNAV DA	1204-1		405 (500-1)				
LNAV MDA	1220-½ 421 (500-½)		1220-¾ 421 (500-¾)		1220-1 421 (500-1)		
CIRCLING	1260-1 461 (500-1)		1260-1½ 461 (500-1½)		1360-2 561 (600-2)		



EC-1, 03 DEC 2020 to 31 DEC 2020

EC-1, 03 DEC 2020 to 31 DEC 2020