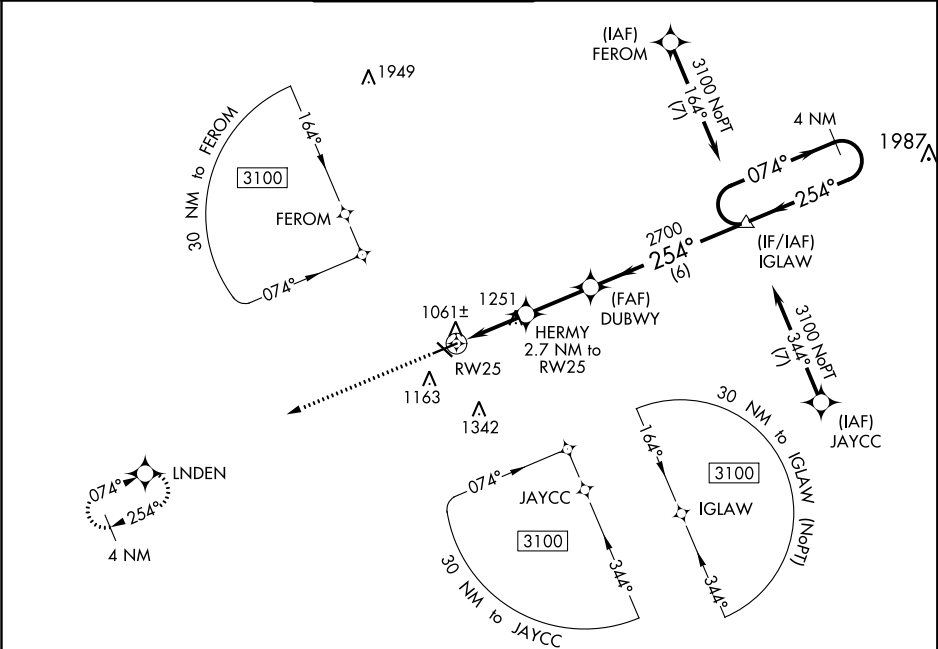


WAAS CH 86341 W25A	APP CRS 254°	Rwy Idg TDZE Apt Elev	5351 995 1001
--	------------------------	-----------------------------	--

RNAV (GPS) RWY 25

JACKSON COUNTY-REYNOLDS FIELD (JXN)

For uncompensated Baro-VNAV systems, LNAV/VNAV NA below -21°C (-5°F) or above 54°C (130°F). DME/DME RNP-0.3 NA. For inop ALS, increase LNAV/VNAV all Cats visibility to ¾ SM.			MALSR 	MISSED APPROACH: Climb to 2700 direct LNDEN and hold.	
ATIS 125.725	GREAT LAKES APP CON ★ 127.3 335.575	JACKSON TOWER ★ 128.475 (CTAF) 257.8	GND CON 121.9	CLNC DEL 121.9	UNICOM 122.95



ELEV 1001	TDZE 995
-----------	----------

