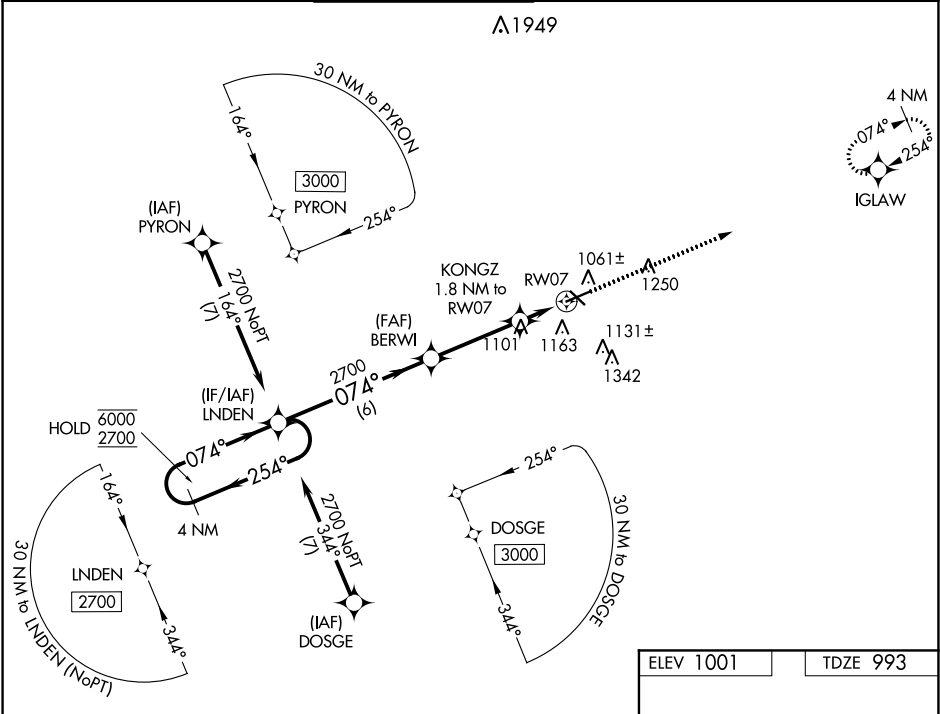


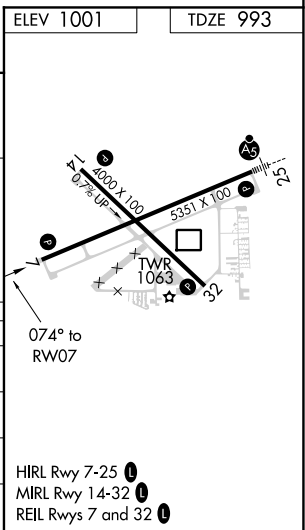
WAAS CH 62841 W07A	APP CRS 074°	Rwy Idg TDZE 993 Apt Elev 1001
--	------------------------	--

RNAV (GPS) RWY 7
JACKSON COUNTY-REYNOLDS FIELD (JXN)

RNP APCH.		MISSED APPROACH: Climb to 3000 direct IGLAW and hold.	
ATIS 125.725	GREAT LAKES APP CON * 127.3 335.575	JACKSON TOWER * 128.475 (CTAF) 257.8	GND CON 121.9
		CLNC DEL 121.9	UNICOM 122.95



4 NM Holding Pattern		3000 IGLAW	
LNDEN		* LNAV only.	
BERWI		KONGZ 1.8 NM to RWY 7	
2700		* 1.2 NM to RWY 7	
6000 2700		RWY 7	
GP 3.00°		TCH 37	
6000 2700		* 1600	
6000 2700		6 NM 3.5 NM 0.6 NM 1.2 NM	
CATEGORY	A	B	C
LPV DA	1258-7/8	265 (300-7/8)	
LNAV/VNAV DA	1292-7/8	299 (300-7/8)	
LNAV MDA	1400-1 407 (400-1)	1400-1 1/2 407 (400-1 1/2)	
CIRCLING	1480-1 479 (500-1)	1660-1 3/4 659 (700-1 3/4)	1660-2 659 (700-2)



EC-1, 03 DEC 2020 to 31 DEC 2020

EC-1, 03 DEC 2020 to 31 DEC 2020