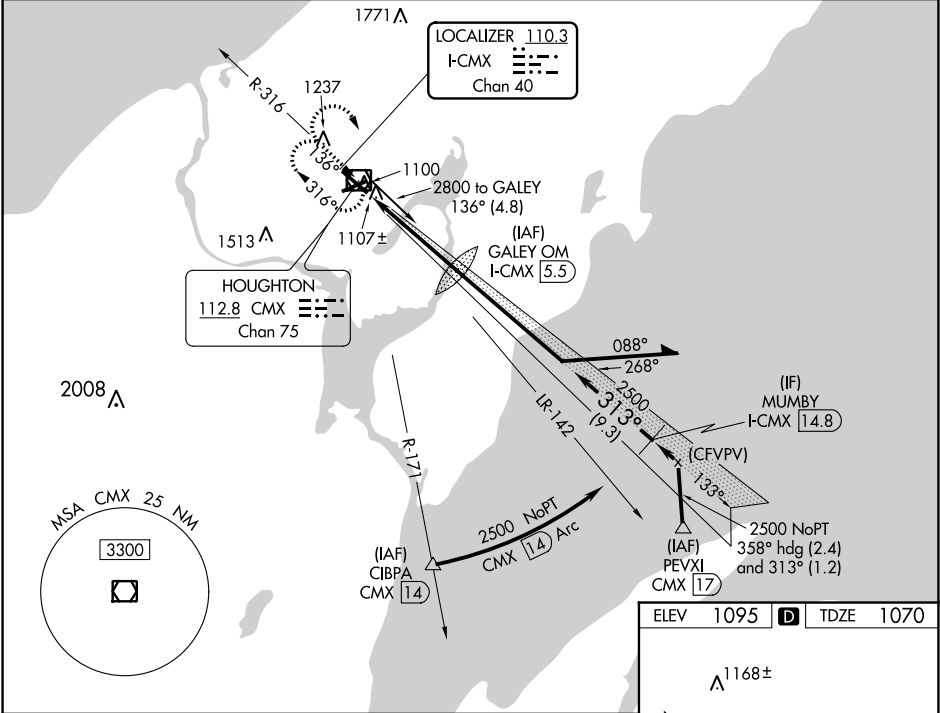


LOC/DME I-CMX <b>110.3</b> Chan <b>40</b>	APP CRS <b>313°</b>	Rwy Idg TDZE Apt Elev <b>6500</b> <b>1070</b> <b>1095</b>
---	------------------------	--

ILS or LOC RWY 31  
HOUGHTON COUNTY MEMORIAL (CMX)

DME required for procedure entry.	MALSR 	MISSED APPROACH: Climb to 2500 then climbing right turn to 3100 direct CMX VOR/DME and hold.
-----------------------------------	-----------	--

ASOS <b>125.675</b>	MINNEAPOLIS CENTER <b>133.55 379.1</b>	UNICOM <b>122.7 (CTAF) 0</b>
------------------------	---	---------------------------------



2500	3100	CMX	GALEY OM I-CMX 5.5		Use I-CMX DME when on localizer course.	Remain within 10 NM
*LOC only.						
*I-CMX						
I-CMX 1.2						
I-CMX 2						
0.8		3.5 NM				
2494						
133°						
313°						
2500						
2800						
GS 3.00°		TCH 46				
CATEGORY	A	B	C	D		
S-ILS 31	1270-½		200 (200-½)			
S-LOC 31	1360-½		290 (300-½)			
CIRCLING	1560-1 465 (500-1)	1600-1 505 (600-1)	1680-1½ 585 (700-1½)	1820-2¼ 725 (800-2¼)		

