

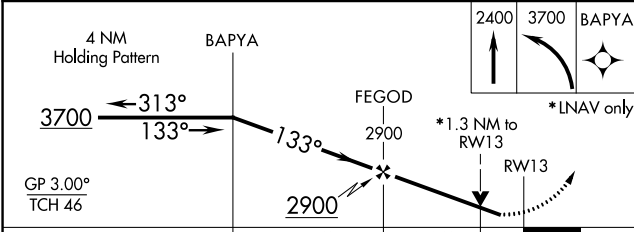
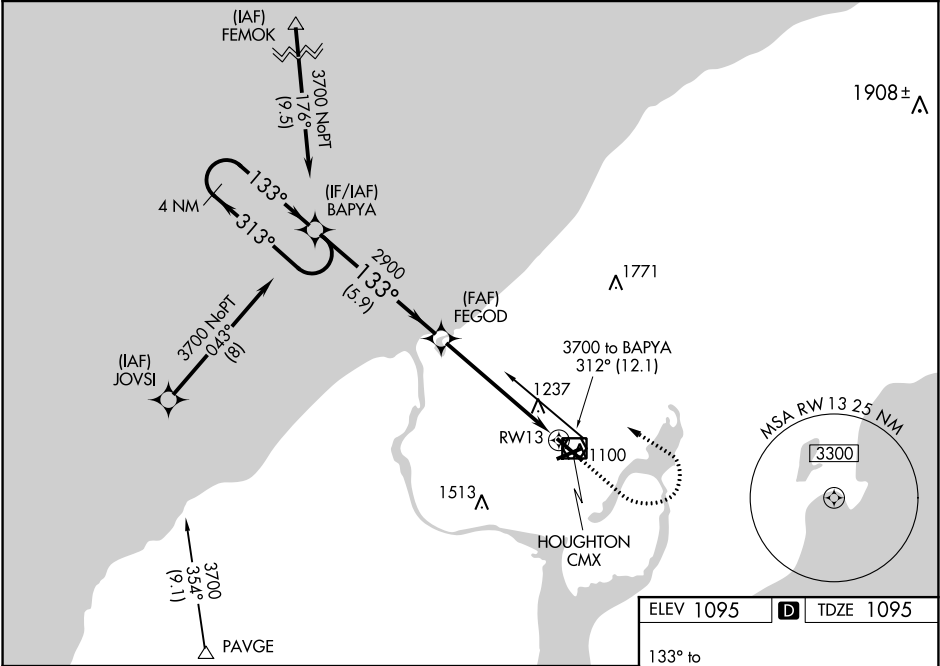
WAAS CH <b>93533</b> <b>W13A</b>	APP CRS <b>133°</b>	Rwy Idg TDZE Apt Elev	<b>6500</b> <b>1095</b> <b>1095</b>
--	------------------------	-----------------------------	---

RNAV (GPS) RWY 13  
HOUGHTON COUNTY MEMORIAL (CMX)

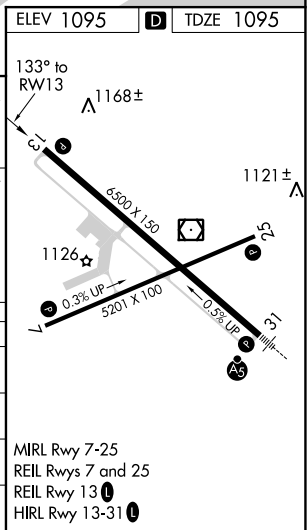
**⚠** For uncompensated Baro-VNAV systems, LNAV/VNAV NA below -21°C (-5°F) or above 54°C (130°F). DME/DME RNP-0.3 NA. Baro-VNAV and VDP NA when using Marquette altimeter setting. When local altimeter setting not received, use Marquette altimeter setting and increase all DA 171 feet and all visibilities ¾ mile. Increase all MDA 180 feet and all Cat C/D visibilities ½ mile. Helicopter visibility reduction below ¾ SM NA.

**MISSED APPROACH:** Climb to 2400 then climbing left turn to 3700 direct BAPYA and hold.

ASOS <b>125.675</b>	MINNEAPOLIS CENTER <b>133.55 379.1</b>	UNICOM <b>122.7 (CTAF) 0</b>
------------------------	---	---------------------------------



CATEGORY	A	B	C	D
LPV DA	1404-1	309 (400-1)		
LNAV/ VNAV DA	1626-17/8	531 (600-1%)		
LNAV MDA	1560-1	465 (500-1)	1560-13/8	465 (500-1%)
<b>C</b> CIRCLING	1620-1 525 (600-1)	1660-1 565 (600-1)	1700-13/4 605 (700-13/4)	1900-21/2 805 (900-21/2)



EC-1, 03 DEC 2020 to 31 DEC 2020

EC-1, 03 DEC 2020 to 31 DEC 2020